

CE SAC

CIVIL ENGINEERING CAREER FAIR

THURSDAY, OCTOBER 14, 2021 • 9:00 AM - 3:00 PM
FRANCE A. CÔRDOVA RECREATIONAL SPORTS CENTER • BLACK AND GOLD GYM

FRIDAY, OCTOBER 15, 2021 • 10:00 AM - 4:00 PM
VIRTUALLY THROUGH CAREER FAIR+



CESAC

CIVIL ENGINEERING STUDENT ADVISORY COUNCIL

The Civil Engineering Student Advisory Council, CESAC, was founded in 1998 with the purpose of increasing interaction between Civil Engineering students and the administration of the School of Civil Engineering.

CESAC is committed to involving students in all phases of engineering education. We aim to build the partnership between students, faculty, administrators, alumni and industry to continue pursuing Purdue Engineering's excellence in education, research, and service.

Each year CESAC hosts the Civil Engineering Career Fair. It is a chance for students to meet with representatives from the best CE companies from across the United States. The Civil Engineering Career Fair is one of the many events organized by CESAC. The CE Student Advisory Council hosts many academic, professional, and social events for the Lyles School of Civil Engineering.

To learn more about CESAC, please visit: <https://engineering.purdue.edu/CESAC/>



Civil Engineering Career Fair: Information Sessions

The Information Sessions, held before the Career Fair, are designed to give students an in-depth look at the respective company, their employees, and current projects. This year, we are hosting information sessions virtually on Thursday, October 7th, and in-person on Wednesday, October 13th. This is a great opportunity for students to learn more about companies and interact with company representatives. Please find a complete list of company information sessions on the following pages, as of when this booklet is published. For the most up-to-date details regarding information please visit: https://engineering.purdue.edu/CESAC/careerfair/information_sessions

Wed. 10/13/21	In-Person Information Sessions			Resume Blitz
	HAMP 1144	HAMP 1252	HAMP 1113	HAMP 1119
5:30-5:55 EDT	Gorove Slade Associates			
6:00-6:25 EDT		United Consulting	Westwood Professional Services	Resume Blitz, hosted by HNTB
6:30-6:55 EDT	Whiting-Turner	Turner Construction Company	JQ Engineering, LLP	
7:00-7:25 EDT	Kimley-Horn	Perry & Associates, LLC	FH Paschen	
7:30-7:55 EDT	DLZ Corporation	CB&I Storage Solutions		
8:00-8:25 EDT	HNTB	Schaefer		

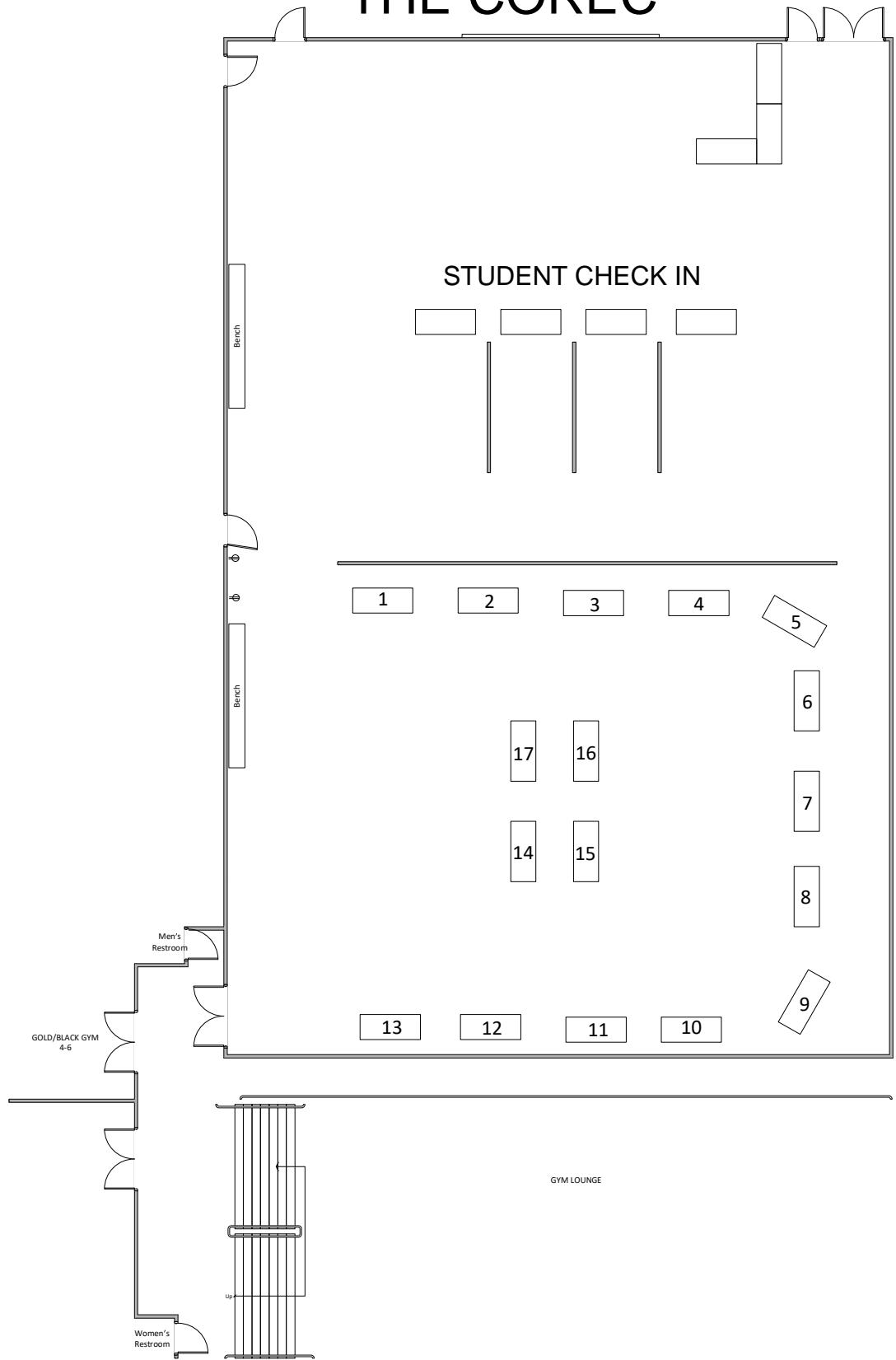
Company	Table #	In-person (10/14)	Virtual (10/15)	Internship	Co-op	Full Time	Bachelors	Masters	PHD	Architectural	Construction	Environmental	General	Geomatics	Geotechnical	Hydraulic	Materials	Structural	Transportation	F-1 Student	H-1B	J1-Student
Abonmarche Consultants, Inc	90	X		X	X	X				X								X				
Advanced Engineering Services (AES) Inc.	91	X	X		X	X				X				X		X						
AECOM			X	X	X	X	X			X	X	X					X	X				
Alfred Benesch & Company	92	X	X	X	X	X				X	X	X	X	X			X	X				
American Structurepoint, Inc.	65	X		X	X	X	X			X	X	X			X		X	X	X	X		
Arcadis, Inc.	33	X		X	X	X	X			X	X			X	X		X	X		X	X	
ARCO, a Family of Construction Companies	74	X		X	X	X				X										X	X	X
ARCO/Murray National Construction Company	73	X		X	X	X				X										X	X	X
ARSEE Engineers, Inc.	19	X		X	X	X	X			X							X					
ATMI Precast	75	X		X	X	X	X			X						X	X					
Barton Malow	20	X		X	X	X				X												
Bergmann			X	X	X	X	X	X	X	X					X		X	X	X	X	X	
BLA, Inc.	21	X		X	X	X	X	X		X					X		X	X				
Blinderman Construction Company, Inc.	76	X		X	X	X	X			X												
Burgess & Niple			X	X	X	X	X										X	X				
Burns & McDonnell			X	X	X	X	X		X	X	X						X	X				
Butler, Fairman & Seufert	22	X		X	X	X				X	X						X	X	X	X	X	X
Butt Construction Company, Inc.	23	X		X	X	X	X	X		X												
CAGE Engineering, Inc.	34	X		X	X	X			X	X	X	X	X	X	X	X	X	X	X			
CB&I Storage Solutions	24	X	X	X	X	X	X	X		X				X		X	X					
CDM Smith			X	X	X	X	X	X	X	X	X			X	X	X	X	X	X			
Christopher B. Burke Engineering, Ltd.	77	X	X		X	X				X	X				X		X	X				
Ciorba Group, Inc.	78	X	X	X	X	X	X			X					X		X	X	X	X	X	X
Civil & Environmental Consultants	18	X		X	X	X	X				X		X	X	X					X	X	X
Clark Dietz	27	X		X	X	X	X		X		X				X		X	X	X	X	X	
Collins Engineers, Inc.	28	X	X	X	X	X	X										X					
Commonwealth Engineers, Inc.	29	X			X	X				X	X											
Complete Structural Consulting	79	X			X	X	X	X									X					
Cordogan Clark	80	X		X	X	X	X		X	X							X			X	X	X
Crawford, Murphy & Tilly			X	X	X	X	X			X	X				X		X	X	X	X	X	X
CTLGroup			X	X	X	X	X	X	X	X				X		X	X	X	X			
CULPEPPER & TERPENING INC.	30	X			X	X				X	X		X	X					X			
DLZ Corporation	81	X		X	X	X	X		X	X	X			X			X	X				
DPR Construction			X	X	X	X	X			X							X			X	X	X
Dunaway	31	X		X	X	X	X				X	X			X		X	X				
E & B Paving	32	X		X	X	X	X			X												
Elford, Inc.			X	X		X				X										X		
EMCS, Inc.	35	X		X	X	X	X			X	X				X		X	X				

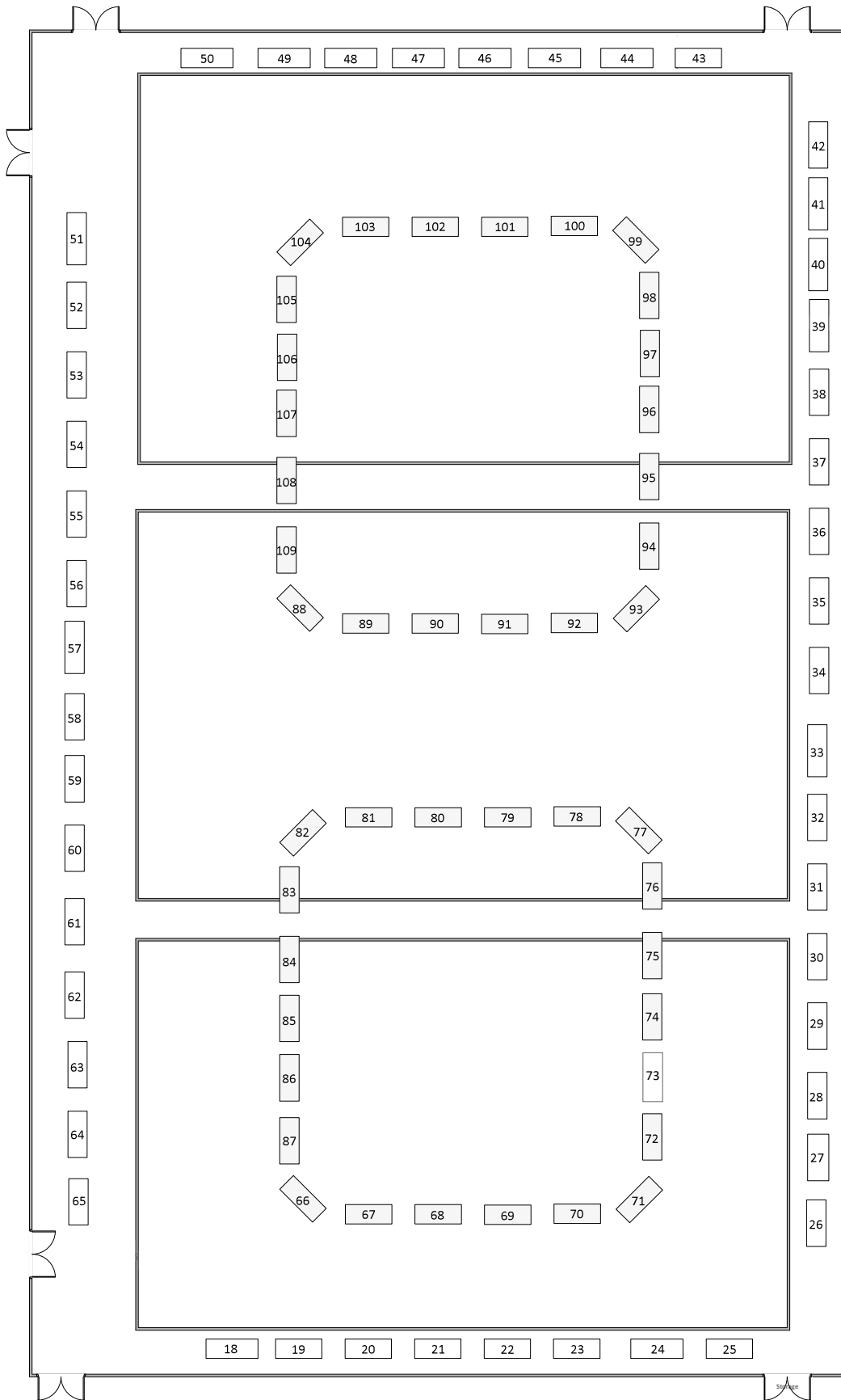
Company	Table #	In-person (10/14)	Virtual (10/15)	Internship	Co-op	Full Time	Bachelors	Masters	PHD	Architectural	Construction	Environmental	General	Geomatics	Geotechnical	Hydraulic	Materials	Structural	Transportation	F-1 Student	H-1B	J1-Student
Engineering Consulting Services (ECS)	82	X		X	X	X	X	X		X	X	X			X	X	X					
Engineering Resources, Inc.			X	X			X	X		X						X		X	X			
Eriksson Engineering Associates, Ltd.	36	X		X	X	X				X	X	X							X			
Etica Group	37	X		X	X	X				X	X								X			
FH Paschen	38	X		X	X	X				X	X											
Fink Roberts and Petrie, Inc			X	X		X	X	X	X									X				
Fishbeck	39	X		X	X	X	X				X					X			X			
Fleis & VandenBrink Engineering	83	X	X	X		X	X	X			X	X							X			
Force Construction Company, Inc.	84	X		X	X	X				X	X							X				
Gasperec Elberts Consulting			X	X		X	X	X			X	X			X	X			X			X
Geosyntec Consultants	40	X	X			X	X	X	X		X		X	X	X					X	X	X
Gewalt Hamilton Associates, Inc.	85	X		X	X	X				X						X			X	X		
GHD			X	X	X	X	X			X	X									X	X	X
Goodwin and Marshall, Inc.	86	X	X	X	X	X	X					X	X		X				X	X	X	X
Gorove Slade Associates	87	X	X	X	X	X	X	X	X										X	X	X	X
GPD Group	41	X		X	X	X	X			X	X	X						X				
Granite Construction Company	66	X	X	X	X	X	X				X	X		X	X		X	X	X			
Greeley and Hansen			X	X		X	X				X				X					X	X	X
H.W. Lochner, Inc.	67	X		X	X	X	X											X	X		X	
Hanson Professional Services Inc.	68	X		X	X	X				X	X			X				X	X			
HKA Global, Inc.	42	X		X	X	X	X			X	X	X								X	X	X
HNTB	26	X	X	X	X	X	X	X			X				X				X	X		
Holder Construction	69	X		X	X	X	X			X	X											
ICC Group	70	X		X	X		X			X												
Indiana Department of Transportation (INDOT) (57	X		X		X	X	X	X	X					X	X			X	X		
Infrastructure and Energy Alternatives	43	X		X	X	X				X												
J.A. Watts, Inc.	44	X		X	X	X				X									X			
Jacob & Hefner Associates, Inc.	71	X		X	X	X					X	X	X		X				X			
john burns construction			X			X	X				X											
Jones & Henry Engineers, Ltd.	72	X		X	X	X	X				X							X				
JQ Engineering, LLP	45	X		X		X	X	X	X					X		X		X				
Keller North America, Inc.	46	X		X	X	X	X			X					X							
KERAMIDA Environmental	94	X		X	X	X	X				X				X							
Keystone Construction Corporation	47	X		X	X	X	X			X										X	X	X
Kimley-Horn	58	X		X	X	X	X				X	X			X			X	X			
KJG Engineering	95	X			X	X	X	X											X			
Klein and Hoffman			X	X	X	X	X	X	X	X									X		X	X
KPFF			X	X		X	X								X			X	X	X	X	X
Lane Construction	48	X		X		X	X			X								X		X	X	
Langan			X	X	X	X	X	X	X		X			X					X	X	X	X

Company	Table #	In-person (10/14)	Virtual (10/15)	Internship	Co-op	Full Time	Bachelors	Masters	PHD	Architectural	Construction	Environmental	General	Geomatics	Geotechnical	Hydraulic	Materials	Structural	Transportation	F-1 Student	H-1B	J1-Student
Lawson-Fisher Associates P.C.	49	X		X	X	X	X	X		X	X	X			X		X	X	X	X	X	X
Lendlease (US) Construction			X		X	X				X												
LJB Inc.	96	X			X	X	X										X					
Lochmueller Group	50	X		X	X	X	X				X							X	X	X		
Manhard Consulting	52	X	X	X	X	X				X					X							
MATT Construction	53	X	X	X	X	X				X												
Maxwell Construction	54	X	X	X	X	X				X												
Medxcel	97	X		X	X	X	X			X	X	X								X		
Messer Construction Co.			X	X	X	X				X												
Middough Inc	55	X		X	X	X				X							X					
Midwestern Engineers	98	X		X	X	X	X			X	X	X		X	X	X	X	X	X	X	X	X
Milestone Construction, Inc	100	X		X	X	X				X	X						X					
ms consultants, inc.	56	X		X	X	X				X	X	X			X		X	X				
Mussett Nicholas & Associates	101	X			X	X				X		X										
NorthPoint Development	59	X		X	X	X				X	X	X					X	X				
Oakley (Luxottica)			X	X	X	X	X					X				X		X				
OHM Advisors			X	X	X	X	X			X								X				
Pape-Dawson Engineers	60	X	X	X	X	X	X	X			X	X			X		X		X	X	X	X
Parsons Corporation	61	X		X	X	X	X			X							X	X				
Perry & Associates, LLC			X		X	X	X										X					
POWER Engineers, Inc.			X	X	X	X	X										X					
Ragle, Inc.	102	X		X	X	X	X			X												
Related CA			X	X	X	X	X			X												
Renewable Energy Systems Americas	103	X	X		X	X	X			X	X					X	X					
Resolution Group, Inc.	62	X		X	X	X	X					X			X		X		X	X	X	X
RockSol Consulting Group			X	X	X	X	X				X				X		X	X				
RQAW Corporation	88	X		X	X	X	X								X		X	X			X	
Ruby+Associates, Inc.	63	X	X	X	X	X	X	X									X					
Schaefer	104	X		X	X	X	X	X									X					
Schmidt Associates	105	X		X	X	X	X			X	X					X						
Simpson Gumpertz & Heger	106	X		X	X	X	X	X	X								X		X	X	X	X
SJCA Inc.	64	X		X	X	X	X	X		X	X			X			X	X	X	X	X	
Skanska			X	X	X	X				X	X							X				
Strand Associates, Inc.			X	X	X	X	X	X			X				X		X	X	X	X	X	X
Swinerton Builders	1	X		X	X	X	X	X	X	X	X	X	X	X	X	X	X	X				
Terracon Consultants, Inc	107	X			X	X								X								
TGRWA, LLC	2	X		X	X	X	X										X		X	X	X	
THE BEAVER COMPANIES			X	X	X	X	X	X	X	X	X	X	X	X	X	X	X	X	X	X	X	X
The Dennis Group			X		X	X	X			X												
The Walsh Group	51	X		X	X	X				X							X	X				
Thieneman Construction Inc	3	X		X	X	X	X			X	X	X					X					

Company	Table #	In-person (10/14)	Virtual (10/15)	Internship	Co-op	Full Time	Bachelors	Masters	PHD	Architectural	Construction	Environmental	General	Geomatics	Geotechnical	Hydraulic	Materials	Structural	Transportation	F-1 Student	H-1B	J1-Student	
Thompson Thrift	4	X		X	X	X	X	X		X	X	X		X		X	X						
Thornton Tomasetti, Inc.			X	X	X	X	X	X		X	X							X		X	X	X	
Thorson Baker and Associates	5	X		X	X	X				X							X						
Tippmann Group	6	X		X	X	X				X													
TLF, Inc.	7	X		X	X	X	X	X		X	X	X					X			X	X	X	
TranSystems Corporation			X	X	X	X	X	X		X							X	X	X	X	X		
Traylor Bros., Inc	8	X	X	X	X	X	X			X							X		X	X	X		
Turner Construction Company	99	X	X	X	X	X	X			X	X						X						
United Consulting	9	X		X	X	X				X	X				X		X	X					
United States Army Corps of Engineers			X	X	X	X	X	X		X	X	X		X	X		X						
USI Consultants Inc.	10	X	X	X	X	X	X				X				X			X					
Uzun+Case			X		X		X										X		X	X	X		
V3 Companies			X	X	X	X	X			X	X						X	X					
VINCI Construction LLC	108	X		X	X	X	X	X		X													
VS Engineering, Inc.	11	X		X	X	X	X			X	X			X		X	X						
W-T Engineering, Inc	12	X		X	X	X				X							X						
W. M. Lyles Co			X	X		X				X													
Walker Consultants	13	X		X	X		X	X									X		X	X	X		
Ward, Getz, & Associates			X	X	X	X	X				X			X									
Weaver Consultants Group	109	X	X	X	X	X	X			X	X		X						X	X	X		
Weeks Marine Inc			X	X	X	X				X									X	X	X		
Weihe Engineers, Inc.	89	X		X	X	X				X	X	X	X	X	X		X						
Wessler Engineering	14	X		X	X	X	X				X				X		X						
Westwood Professional Services	15	X		X	X	X	X				X			X	X		X	X	X	X	X	X	
WGI	16	X		X	X	X	X			X			X				X	X					
Whiting-Turner	93	X	X	X	X	X				X	X						X						
Wight & Company			X	X		X	X			X	X	X		X	X		X	X	X	X	X	X	
Wiss, Janney, Elstner Associates, Inc.	17	X		X	X	X	X	X		X							X						
WSP USA	25	X		X	X	X	X	X		X	X			X	X		X	X	X	X	X	X	

FEATURE GYM IN THE COREC





Entry Point to Gym

Abonmarche Consultants, Inc

Engineering, Architectural, Land Surveying, Community Planning, Development services firm



come see us

*IN-PERSON - October 14 (Thursday)
EST October 14, 2021*

<http://www.abonmarche.com>



Advanced Engineering Services (AES) Inc., is a rapidly growing civil engineering consulting firm based in Hammond, Indiana that specializes in geotechnical engineering, construction materials testing, and inspection services serving the northwestern Indiana and greater Chicago areas. AES is an Indiana Department of Transportation (INDOT) approved geotechnical engineering and inspection consulting firm. Our lab is accredited through AMRL, CCRL and US Army Corps of Engineers.

come see us

*IN-PERSON - October 14 (Thursday)
EST October 14, 2021
VIRTUAL - October 15 (Friday) EST
October 15, 2021*

<http://www.adv-engrs.com>



AECOM was created to design, build, finance and operate the world's infrastructure. Whether we serve clients at one phase of the project lifecycle or throughout it, our role is to apply creative vision, technical expertise, interdisciplinary insight, and local experience to address complex challenges in new and better ways. We help our clients deliver critical resources and services, improve the places where people live and work, and sustain a world in which we can all flourish.

come see us

*VIRTUAL - October 15 (Friday) EST
October 15, 2021*

<http://www.aecom.com>



Benesch is a unique kind of professional services firm—we are large enough to handle our clients' most complex and challenging assignments, but nimble enough to offer an exceptional level of customer service. We make our clients' number one priority our priority as well—overall project success.

We are Alfred Benesch & Company.

come see us

*IN-PERSON - October 14 (Thursday)
EST October 14, 2021
VIRTUAL - October 15 (Friday) EST
October 15, 2021*

<http://benesch.com>



come see us

*IN-PERSON - October 14 (Thursday)
EST October 14, 2021*

American Structurepoint creates projects that people and communities value. We specialize in delivering innovation and vision in Architecture + Interiors, Engineering + Infrastructure, Planning + Economic Development, IT Solutions, and Investigative Services from concept to completion. Collaboration and teamwork comprise the foundation of everything our firm does. Using the expertise of 400 in-house professionals and consultants working across 11 disciplines, American Structurepoint strives to deliver the best design solutions-one business, one community at a time.

<https://www.structurepoint.com/>



come see us

*IN-PERSON - October 14 (Thursday)
EST October 14, 2021*

Arcadis is the leading global natural and built asset design and consultancy firm working in partnership with our clients to deliver exceptional and sustainable outcomes through the application of design, consultancy, engineering, project and management services.

Arcadis differentiates through its talented and passionate people and its unique combination of capabilities covering the whole asset life cycle, its deep market sector insights and its ability to integrate health & safety and sustainability into the design and delivery of solutions across the globe.

We are 28,000 people who generate \$3.8 billion in revenues. We support UN-Habitat with knowledge and expertise to improve the quality of life in rapidly growing cities around the world.

<https://www.arcadis.com>



come see us

*IN-PERSON - October 14 (Thursday)
EST October 14, 2021*

Our goal is the same today as it was when we started in 1992: to be the very best design-build contractor in the industry. We use a proven design-build methodology to bring our clients' vision to life while delivering the very best experience.

We have offices to serve clients from coast-to-coast - across an array of industries.

Our expert team of in-house engineers, project managers, superintendents, modelers and architects are capable of designing and building the most demanding projects anywhere in the country.

<http://www.thearcoway.com>



come see us

*IN-PERSON - October 14 (Thursday)
EST October 14, 2021*

Our goal is the same today as it was when we started in 1992: to be the very best design-build contractor in the industry. We use a proven design-build methodology to bring our clients' vision to life while delivering the very best experience.

We have offices to serve clients from coast-to-coast - across an array of industries.

Our expert team of in-house engineers, project managers, superintendents, modelers and architects are capable of designing and building the most demanding projects anywhere in the country.

<http://www.thearcoway.com>



ARSEE Engineers has been in business for over 50 years providing structural engineering consulting services to our clients. We specialize in new design, renovations/remodeling, condition assessments, and analysis. Our services also extend to the building envelope and building science, historic preservation, parking, and construction observation. Our client-oriented approach has been our foundation since 1968 and continues to be our focus in delivering meaningful solutions and quality projects.

come see us

*IN-PERSON - October 14 (Thursday)
EST October 14, 2021*

Openings for full-time personnel include:
-Structural Engineer (Bachelors or Masters in CE-Structural)
-Field Technician (Bachelors in CE-Construction/CEM/BCM)
-AutoCAD/Revit Detailer (Bachelors in CGT/CE/CEM/BCM)

<http://www.arsee-engineers.com>



ATMI Precast is reimagining the art and science of precast design and digital integration. Embracing innovative BIM technology with fully associative drawings, ATMI Engineering is building a robust delivery system that links design engineering with sales, production, and erection.

We employ a dedicated and talented team of modelers and engineers who utilize an information rich suite of programs such as Tekla Structures and Tedds to produce construction- accurate BIM models that seamlessly link together precast-prestressed shop drawings, calculations, and production tickets.

Founded in 1990, ATMI has grown into the largest full-service precast builder in the Midwest. We design, manufacture, and erect a wide range of architectural and structural precast components on a myriad of b...

come see us

*IN-PERSON - October 14 (Thursday)
EST October 14, 2021*

<http://www.atmiprecast.com/>



Seeded in entrepreneurship. Rooted in our communities. Unified in a core purpose.

For nearly a century, Barton Malow has been committed to Building with the American Spirit: People, Projects, and Communities. The Barton Malow Family of Companies is comprised of four entities and five partner firms across North America. With more than 2,200 team members and 15 offices, our 100% employee-owned enterprise is on a mission to transform the construction industry through innovation and increased efficiencies in the building process.

come see us

*IN-PERSON - October 14 (Thursday)
EST October 14, 2021*

We work in a wide range of diverse markets, including automotive, power, energy, industrial, infrastructure, healthcare, commercial, K12, higher education, sports, and entertainment.

Visit www.bartonmalow.com to learn more about Barton Malow.

<http://www.bartonmalow.com>



BERGMANN
ARCHITECTS ENGINEERS PLANNERS

For forty years, Bergmann has offered Architecture, Engineering, and Planning services to clients all across the US and world. Bergmann has two divisions; Buildings & Infrastructure. Our Buildings team is hiring Architectural designers, as well as Electrical, Mechanical, and Structural Engineers and works on a variety of architectural projects (please note-we do not do any residential work). Our Infrastructure team is hiring Civil, Environmental, and Construction engineers and do a variety of transportation, construction, and water resources projects. AA/EEO including Veterans and Disabled. Please check out bergmannpc.com to learn more!

come see us

*VIRTUAL - October 15 (Friday) EST
October 15, 2021*

<http://bergmannpc.com>



BLA, established in 1978, is a Civil Engineering consulting firm with offices in Itasca, IL and Indianapolis, IN. Our services include primarily transportation, drainage and structural engineering as well as construction inspection and management. Our Indiana office provides drainage / stormwater engineering, transportation and structural / bridge design services for multiple public infrastructure projects including INDOT, City of Indianapolis DPW and IndyGo, among others. We are recruiting primarily Civil Transportation / Design Engineer candidates to support such work in our Indianapolis, IN or Itasca, IL offices.

come see us

*IN-PERSON - October 14 (Thursday)
EST October 14, 2021*

<http://www.BLA-Inc.com>



For more than 45 years, Blinderman Construction has provided a full range of construction services to satisfied customers in the Chicagoland area and beyond. A family-owned firm, we bring a thorough commitment to partnership, an evolved understanding of the construction industry, and a solid record of outstanding past performance to your important project.

come see us

*IN-PERSON - October 14 (Thursday)
EST October 14, 2021*

This deep experience arms us with the ability to proact and react with ingenuity - transforming our customer's unique vision into a successful reality. Working with Blinderman you get hands-on, committed ownership along with a dedicated and accomplished staff with the wherewithal, skill and urgency to get the job done right.

<http://www.blinderman.com>

BURGESS & NIPLÉ

For more than 100 years, Burgess & Niple (B&N) has led the development of infrastructure in rural and urban regions. Our success is driven by a passion for advancing the built environment with exceptional concern for quality of life, safety and sustainability.

come see us

*VIRTUAL - October 15 (Friday) EST
October 15, 2021*

We work in partnership with private and government entities to lead planning, secure funding, develop designs and manage implementation. B&N's team of in-house professionals includes planners, engineers, architects, surveyors, environmental scientists, geologists and much more. Our work spans the world and ranges from complex, urban renewal projects to finding potable water arid, rural villages.

<http://www.burgessniple.com>



At Burns & McDonnell, you are empowered to write your own story. If you have big dreams - and the talent and ambition to back them up - this is your kind of place. From offices across the U.S. and around the world, we take on some of the world's toughest challenges with the industry's best thinking. As a 100% employee-owned firm, you'll have the opportunity here to build your own success story, both personally and professionally. You will be empowered to build not just projects, but your career.

come see us

*VIRTUAL - October 15 (Friday) EST
October 15, 2021*

<https://www.burnsmcd.com/careers>



Butler, Fairman & Seufert, Inc., stands as a premier full-service civil engineering firm with over 195 employees including Professional Engineers, Land Surveyors, Landscape Architects, Architecture Historians and technical support staff. We are well known for our depth of technical expertise and responsive service. Clients appreciate our commitment to earning that reputation on every assignment.

come see us

*IN-PERSON - October 14 (Thursday)
EST October 14, 2021*

<http://www.bfsenr.com>



Since 1927 Butt Construction Company has performed every job with a combination of expertise and professionalism that has earned the trust and confidence of our clients.

Our experience encompasses the complete spectrum of construction including retail stores, research facilities, hospitals, factories, office buildings, public works, schools and universities. Additions and renovations are also an important part of our business.

come see us

*IN-PERSON - October 14 (Thursday)
EST October 14, 2021*

<http://www.buttconstruction.com>



CAGE Civil Engineering is a full service civil engineering consulting firm, offering professional services over a wide range of market sectors and geographic areas. With a focus on being a true strategic partner with our clients and helping to deliver successful land development projects, we understand that service and communication are paramount. It is this philosophy that has allowed us to build a strong client base that covers the residential, retail, industrial, educational, office & medical, sports & entertainment, park districts, and municipal market sectors on a regional and national basis.

come see us

*IN-PERSON - October 14 (Thursday)
EST October 14, 2021*

<https://www.cagecivil.com>



come see us

*IN-PERSON - October 14 (Thursday)
EST October 14, 2021
VIRTUAL - October 15 (Friday) EST
October 15, 2021*

CB&I Storage Solutions is the world's leading designer and builder of storage facilities, tanks and terminals. With more than 59,000 structures completed throughout our 130-year history, we have the global expertise and strategically-located operations to provide customers world-class storage solutions for even the most complex energy infrastructure projects.

<https://www.cbistorage.com>



CDM Smith provides lasting and integrated solutions in water, environment, transportation, energy and facilities to public and private clients worldwide. As a full-service engineering and construction firm, we deliver exceptional client service, quality results and enduring value across the entire project life cycle. Our client base focuses on government and industry. The firm is distinguished by our leadership and flexibility in design-build and alternative delivery approaches for environmental and infrastructure projects.

come see us

*VIRTUAL - October 15 (Friday) EST
October 15, 2021*

<https://www.cdmsmith.com/>



The Burke Group is a Rosemont-based consulting engineering and surveying firms serving the needs of both private and public sector clients. Our staff of almost 400 professionals in eight offices covering two states, provides a comprehensive list of specializations-civil, municipal, transportation, water resources, mechanical, structural, construction, traffic, and environmental engineering and environmental resources services.

come see us

*IN-PERSON - October 14 (Thursday)
EST October 14, 2021
VIRTUAL - October 15 (Friday) EST
October 15, 2021*

<http://cbbel.com>



PROMISE: At Ciorba, we've built our community to better serve yours. By working collaboratively, both internally and externally, our team of experts delivers superior engineering solutions while building a community of support and success with our clients and partners.

MISSION: We deliver people-first engineering solutions that add value to communities, solve real-world problems and improve lives. We meet the needs of our clients with an unwavering commitment to those we work with and those around us.

come see us

*IN-PERSON - October 14 (Thursday)
EST October 14, 2021
VIRTUAL - October 15 (Friday) EST
October 15, 2021*

<https://www.ciorba.com/>



Civil & Environmental Consultants, Inc. is an engineering and environmental consulting firm with more than 1,100 team members and 29 offices nationwide. Headquartered in Pittsburgh, Pennsylvania, CEC is consistently ranked among the top firms on Engineering News-Record's annual lists of the Top Design Firms and Top Environmental Firms.

come see us

*IN-PERSON - October 14 (Thursday)
EST October 14, 2021*

<http://www.cecinc.com>



Infrastructure goes beyond the functional. It is the foundation that connects people, revitalizes communities, and spurs economic growth. Clark Dietz is a multi-disciplinary engineering firm specializing in the planning, design, and construction inspection of transportation, civil, environmental, electrical, mechanical, and structural systems. Headquartered in the Midwest, we offer engineering services from offices in Illinois, Wisconsin, Indiana, and Kentucky. Our depth of talent across disciplines allows our staff the opportunity to collaborate and serve our clients with innovative, sustainable solutions.

come see us

*IN-PERSON - October 14 (Thursday)
EST October 14, 2021*

<https://www.clarkdietz.com/>



Collins is an ENR Top 500 Design Firm, providing design and analysis services coupled with field experience to the transportation, marine, construction, and land development industries. As a mid-size, but growing, multi-disciplined civil engineering and professional services firm, Collins is a great place to grow your career.

come see us

*IN-PERSON - October 14 (Thursday)
EST October 14, 2021
VIRTUAL - October 15 (Friday) EST
October 15, 2021*

<https://www.collinsengr.com/>



COMMONWEALTH ENGINEERS - A HISTORY OF SUCCESS

Since 1974, Commonwealth Engineers has earned a reputation as a top-tier water resources firm providing award-winning, cost-effective planning, permitting, design, and construction engineering solutions. Over four decades years later, our commitment and dedication to protecting water quality, and more generally the quality of life for Indiana residents, continues to grow.

come see us

*IN-PERSON - October 14 (Thursday)
EST October 14, 2021*

Consistently ranked as one of the top engineering firms in the State, our focus remains solely on Indiana Clients and their needs.

Our staff includes professional engineers and design engineers. Additionally, we employ planners, surveyors, environmental scientists, regulatory coordinators, and funding (grant) experts, among other experienced support

<http://www.commonwealth-engineers.com>



Complete Structural Consulting, Inc. is a structural engineering consulting firm headquartered in Indianapolis, Indiana. We have four offices in the United States. CSC was established in 2012 to provide innovative engineering services for fabricators and general contractors throughout the country. We have developed key partnerships with architects, material suppliers, and steel detailers. We have experience in industrial, educational, and healthcare facilities, commercial office space, military facilities, renovations and additions, and structural investigations.

come see us

*IN-PERSON - October 14 (Thursday)
EST October 14, 2021*

We are a multi-disciplined team that understands the importance of streamlining the engineering process. Our seasoned team offers bundled solutions to support the detailing process and specialty engineering.

<http://www.completestructural.com>



We have completed more than 5,000 projects resulting in successful learning environments for education, working, civic and cultural, performing arts, sports and recreation, healthcare, and residential environments. Our future is about providing solutions across all markets based on our integrated expertise and design thinking. We have created an innovative service model that provides clients with a network of over 100 professionals. To accomplish this, Cordogan Clark makes available a strong network of professionals across all service categories including architecture, mechanical-electrical-plumbing engineering, structural engineering, architectural based construction management advisor services, master planning, security, interiors, graphic design, campaign assistance, and a host of o...

come see us

*IN-PERSON - October 14 (Thursday)
EST October 14, 2021*

<http://www.cordoganclark.com>



For nearly 75 years, Crawford, Murphy & Tilly, Inc., (CMT) has excelled at helping public and private clients achieve value through the planning, design, and construction of the infrastructure they build and manage.

The firm is headquartered in Springfield, Illinois, with 21 regional offices in Illinois, Missouri, Indiana, Ohio, Tennessee, Georgia and Florida. A consistent recipient of both state and national awards, CMT looks forward to a future of innovation built upon a foundation of excellence.

come see us

*VIRTUAL - October 15 (Friday) EST
October 15, 2021*

<https://cmtengr.com>



CTLGroup is an internationally recognized expert engineering, architectural, and materials science consulting and testing firm. Our engineering expertise is complemented by one of the largest and most comprehensive private material and structural testing laboratories in the world. Our experts address challenges from an engineering, architectural or scientific perspective across many markets that range from the simple to the most complex.

come see us

*VIRTUAL - October 15 (Friday) EST
October 15, 2021*

<https://www.ctlgroup.com/>



Culpepper & Terpening, Inc.
Consulting Engineers and Land Surveyors

FIRM OVERVIEW

come see us

*IN-PERSON - October 14 (Thursday)
EST October 14, 2021*

Culpepper & Terpening, Inc. (C&T) has established itself as the leading engineering and surveying firm on the Treasure Coast. Practicing since 1976, the firm is widely recognized for its abilities to design, engineer, survey, and permit complex projects. Project experience includes municipal water and sewer projects, community planning, roadway design, marina design, and municipal bond financing. Clients include both private and public sectors.

C&T staff consists of approximately 40 engineers, surveyors, designers, land planners, permit specialists, construction

<http://ct-eng.com>



DLZ is an award-winning professional services firm providing complete engineering and architectural services as well as construction services and other specialized professional services including surveying, right-of-way acquisition, and materials testing. DLZ serves public and private entities across the nation. DLZ's multiple offices share a common goal - to help our clients solve problems and enhance their opportunities.

come see us

*IN-PERSON - October 14 (Thursday)
EST October 14, 2021*

Consistently ranked as one of Engineering News-Record's prestigious Top 150 Design Firms in the United States, DLZ's continual growth and success is a testament to the quality of our work and the satisfaction of our clients. Additionally, DLZ is ranked as an ENR Top 100 Firm for Pure Design; an ENR Top 50 Program Management Firm; an ENR Top 100 Construction Manag...

<https://dlz.com/>



DPR Construction is a unique technical builder with a passion for results. Ranked in the top 50 general contractors in the country since 1997, we are a national commercial contractor and construction manager that has grown with our customers by delivering measurably more value.

come see us

*VIRTUAL - October 15 (Friday) EST
October 15, 2021*

<https://www.dpr.com/>



Dunaway is a professional services company with a solid, results-oriented history. The firm provides civil engineering, structural engineering, planning, landscape architecture, environmental services, traffic and parking engineering, hydraulics/hydrology, and land surveying services to a wide variety of public and private clients.

Dunaway offers a high level of client service and responsiveness and currently has 6 offices in Texas: Fort Worth, Dallas, Farmersville, Midland, Austin and San Antonio.

come see us

*IN-PERSON - October 14 (Thursday)
EST October 14, 2021*

<https://dunaway.com/>



With more than 1,000 full-time and seasonal employees, thousands of pieces of equipment, 12 area offices, 19 permanent asphalt plants and a broad range of transportation construction solutions, there's a lot we can tell you about us...and even more that satisfied E&B customers could say as well.

We are the contractor of choice for hundreds of public sector and private industry customers.

come see us

*IN-PERSON - October 14 (Thursday)
EST October 14, 2021*

<http://ebpaving.com>



Elford, Inc. is among the top commercial construction companies in central Ohio serving the healthcare, elder care, industrial, manufacturing, education, corporate office, and retail facilities markets.

come see us

*VIRTUAL - October 15 (Friday) EST
October 15, 2021*

<http://www.elford.com>



EMCS, Inc. is a multidiscipline civil engineering firm with offices in Milwaukee, Wausau, and Madison, Wisconsin; and Indianapolis, Indiana. Since 1983 we have been providing quality planning, design, and field services to both the public and private sector. Our service areas include transportation planning and design, traffic engineering, environmental services, structural design, land survey, and construction management.

come see us

*IN-PERSON - October 14 (Thursday)
EST October 14, 2021*

<http://www.emcsinc.com>



Founded in 1988, Engineering Consulting Services (ECS) is a leader in geotechnical, construction materials, environmental and facilities engineering. Today, with 2,000 employees, ECS has grown to more than 65 offices and testing facilities spread across the Mid-Atlantic, Midwest, Southeast, and Southwest. We are hiring civil engineers for summer internships and staff project manager positions. Through training and hands-on experience, our program places you in a position of responsibility, builds your skills outside of the classroom, and cultivates life-long industry connections. ECS is currently ranked 68 in Engineering News-Record's Top 500 Design Firms (ENR, April 2020) and 154 in Engineering News-Record's Top 200 Environmental Firms (ENR, July 2020).

come see us

*IN-PERSON - October 14 (Thursday)
EST October 14, 2021*

<https://www.ecslimited.com/>



Engineering Resources is a multi-disciplined Civil Engineering consulting firm specializing in Transportation Engineering, Municipal Engineering, Structural Engineering, Civil/Site Design, Landscape Architecture, and Construction Inspection.

come see us

*VIRTUAL - October 15 (Friday) EST
October 15, 2021*

<http://www.eri.consulting>



Eriksson Engineering Associates, Ltd. (EEA) was founded in 1995 with client connections in mind-looking beyond each individual project to long-term growth and relationships. We navigate complex civil engineering site design, traffic and parking, and landscape architecture projects.

come see us

*IN-PERSON - October 14 (Thursday)
EST October 14, 2021*

<http://www.eea-ltd.com>



Etica is a professional consulting firm that provides architectural, engineering, surveying, building envelope consulting, and construction inspection services. We incorporate an unmatched integrity into a streamlined corporate business model that reflects consistent growth, expansion and success. The word "etica" means ethics. This foundational building block of the firm is reflected in everything we do and why it is our namesake.

come see us

*IN-PERSON - October 14 (Thursday)
EST October 14, 2021*

We are a full-service design firm that serves corporate, institutional, public sector, and private sector clients, promoting sustainable design practices and utilize LEED and sustainable project concepts. With our expanded team stemming from the acquisition of Avon-based civil engineering firm PCS Engineers, our range of expertise and depth of talent has ...

<http://www.eticagroup.com>



After more than three decades working in construction, and having taken the leading role on thousands of projects in a number of different industries, we can very confidently say that we know what we're doing.

We're an industry leader in infrastructure construction and rehabilitation, renovation and repair work, as well as in alternative delivery methods such as Design-Build Construction, Job Order Contracting and Construction Manager as Contractor. Serving both the public and private sectors, we have extensive construction experience in heavy civil transportation (including major highways, bridges, and mass transit systems), public works projects, municipal buildings, commercial properties, and private institutions.

come see us

*IN-PERSON - October 14 (Thursday)
EST October 14, 2021*

<https://www.fhpaschen.com/>



Fink Roberts & Petrie, Inc. has long been known as a premier structural engineering firm by architects, facility owners and contractors alike. Founded in 1944 and located in Indianapolis, Indiana, FRP has consistently been involved in significant structural engineering and architectural projects.

come see us

*VIRTUAL - October 15 (Friday) EST
October 15, 2021*

<http://frpinc.com>



Established in 1956, Fishbeck is one of the premier professional consulting firms in the nation with 14 regional offices and more than 475 staff members serving both public and private clients. Engineering, environmental sciences, architecture, and construction management are the cornerstones of Fishbeck's services and integrated project approach. With the technical capabilities and understanding to take even the largest projects from initial concept to completion, we are a hands-on, design-oriented practice at heart. Our team of experts takes pride in our commitment to reliability in design, connection to our clients, and creativity at our core.

come see us

*IN-PERSON - October 14 (Thursday)
EST October 14, 2021*

<http://www.fishbeck.com>



We are an employee-owned, multi-disciplined civil engineering and architecture firm that has become a one-stop shop for infrastructure planning, design and construction. Our firm's steady growth can be attributed to several things - hiring good people, doing good work and having good client relationships.

come see us

*IN-PERSON - October 14 (Thursday)
EST October 14, 2021
VIRTUAL - October 15 (Friday) EST
October 15, 2021*

From the beginning, we invested in our people and provided them with opportunities, tools and technology to be the best. We created a demand for our services and expertise by providing clients with exceptional service, innovative solutions and great advice on how to fund projects, including getting project grants or low-interest loans.

Fleis & VandenBrink wholly owns F&V Operations (FVOP) and F&V Construction (FVC).

<http://www.fveng.com>



Since the first FORCE project in 1946, Force Construction Company, Inc. has been guided by a commitment to providing our clients with quality construction services. Proudly serving our clients as a full-service general contractor, our professional staff members work in partnership with our clients from initial meeting through project completion, which has earned FORCE our reputation as a dynamic construction firm.

come see us

*IN-PERSON - October 14 (Thursday)
EST October 14, 2021*

<http://www.forceco.com>



Gasperc Elberts Consulting (GEC) was founded by Lisa Gasperc, PE and Megan Elberts, PE to provide high-quality, professional and cost-effective engineering and surveying services throughout the Chicagoland area. Lisa and Megan bring over 30 years of civil engineering experience to their clients. Their philosophy is to understand the unique requirements of each project while providing each client with a high level of personal service and professionalism.

come see us

*VIRTUAL - October 15 (Friday) EST
October 15, 2021*

<http://www.geconsultllc.com>



come see us

*IN-PERSON - October 14 (Thursday)
EST October 14, 2021
VIRTUAL - October 15 (Friday) EST
October 15, 2021*

Geosyntec is a specialized consulting and engineering firm that works with private and public sector clients to address new ventures and complex problems involving our environment, natural resources, and civil infrastructure. We deliver solutions through Geosyntec and our wholly-owned, affiliates (SiREM, Savron, Green Harbor Energy, Geosyntec Asia, and Geosyntec Europe), with a combined staff of approximately 1500 engineers, scientists, and related technical and project support personnel. We serve our clients from more than 80 offices in the United States, Canada, the United Kingdom, Ireland, Australia, and Malaysia. We strive to provide a stimulating, progressive, and friendly work environment that will enable our staff to develop their careers and grow as professionals.

<http://www.geosyntec.com>



come see us

*IN-PERSON - October 14 (Thursday)
EST October 14, 2021*

Gewalt Hamilton's talented staff, of more than 90 people, consists of Professional Engineers, Surveyors, CAD Technicians, Environmental Specialists, Construction Managers, GIS Specialists and support staff. Many members of our staff are certified in specialty areas of our industry. Our experience, dedication, and resources provide our clients with innovative designs and solutions at every stage of the development and redevelopment processes. Our personal approach to each project truly sets us apart from the competition.

All work and no play can result in suboptimal performance. Gewalt Hamilton believes that plenty of family and personal time creates more productive, happy employees. To help unite our teams and refresh minds, we organize internal and external social activities. Annual e...

<http://www.gha-engineers.com>



come see us

*VIRTUAL - October 15 (Friday) EST
October 15, 2021*

GHD is one of the world's leading professional services companies operating in the global markets of water, energy and resources, environment, property and buildings, and transportation. We provide engineering, architecture, environmental and construction services to private and public sector clients.

<http://www.ghd.com>



come see us

*IN-PERSON - October 14 (Thursday)
EST October 14, 2021
VIRTUAL - October 15 (Friday) EST
October 15, 2021*

Goodwin & Marshall, Inc. is a 30-person Civil Engineering and Surveying Company headquartered in Grapevine, Texas near DFW airport. We have satellite offices in Phoenix, Memphis, and Denver. G&M has been in business for over 25 years and regularly works with co-op students from Texas A&M, Purdue, Michigan State, Illinois and UT Tyler. We specialize in new development and municipal infrastructure, with an emphasis on residential, industrial and commercial projects. We currently have projects in Arizona, Colorado, Mississippi, Tennessee, Florida, and Texas. G&M has 8 Professional Engineers and 3 Registered Surveyors. We are firmly committed to producing a quality work product for our Clients within their time frames, and diligently represent their interests to cities and other outs...

<http://gmcivil.com>

GOROVE SLADE

Transportation Planners and Engineers

We are experts in the design and operation of the transportation infrastructure that defines buildings and places, moves people and goods, and links places that people live, work, and play. Our work supports private development, institutions, colleges/universities, and government agencies using a highly responsive, client-focused approach. We utilize transportation engineering and planning best practices to balance the needs of all modes of travel. We seek to create efficient, safe, and attractive linkages that encourage sustainable transportation options and right-size the parking supply.

come see us

IN-PERSON - October 14 (Thursday)

EST - October 14, 2021

VIRTUAL - October 15 (Friday) EST

October 15, 2021

<https://www.goroveslade.com/>



come see us

IN-PERSON - October 14 (Thursday)

EST - October 14, 2021

Join GPD Group, where our purpose is to improve the well-being of our employees, clients, communities and business partners by transforming opportunities into success. We are passionate about the work we do and the relationships we build with clients. Our employee ownership structure fosters a non-hierarchical collaborative work environment, where everyone is encouraged to share their ideas and creativity to the betterment of the organization and our clients. This structure also enables each associate to explore and expand their talents, reach their full potential, and deliver to the core traits that guide GPD group and allow us to deliver successfully for our clients.

For more than 55 years, GPD Group has been providing architectural, engineering and planning services to clients a...

<http://www.gpdgroup.com>



come see us

IN-PERSON - October 14 (Thursday)

EST - October 14, 2021

VIRTUAL - October 15 (Friday) EST

October 15, 2021

We believe great ideas are born from great partnerships. From the largest, most complex infrastructure projects to the smallest construction jobs, from transportation to power to water projects, we're putting our commitment to collaboration to work. As one of the nation's largest diversified infrastructure providers and construction materials producers, we strive to provide our customers with the highest standards of quality, safety and service. We believe that when committed people work together, you generate more value at every level and build a better world for everyone.

<https://www.graniteconstruction.com/>



come see us

VIRTUAL - October 15 (Friday) EST

October 15, 2021

Greeley and Hansen is a leader in developing innovative engineering solutions for a wide array of water, wastewater, water reuse, and solid waste challenges aimed at improving public health, safety, and welfare. With a staff of more than 300 in 16 offices across the US, Greeley and Hansen provides services for all phases of projects ranging from master planning and feasibility studies through design, construction, and start-up. The firm also provides architectural and management consulting services.

Projects that Greeley and Hansen has completed for clients continue to receive various industry awards for design and engineering excellence. Engineering News Record ranks Greeley and Hansen among both the "Top 25 Designers in Wastewater Treatment" and in "Sewerage and Solid Waste".

<http://www.greeley-hansen.com>

LOCHNER

Founded in Chicago in 1944, Lochner provides planning, environmental, design, construction engineering and inspection, and right of way services for surface transportation, rail, transit, and aviation clients across the United States. Listed among ENR's top 500 firms, we have a rich, 77-year history as an innovator in transportation and infrastructure.

come see us

*IN-PERSON - October 14 (Thursday)
EST October 14, 2021*

<http://www.hwlochner.com>



Whether you dream of a career in engineering, planning, or surveying, we have a multitude of full-time and part-time paid internship opportunities to complement your classroom experience. As an employee-owned company, we are invested in each other's success. Our interns have a seat at the table and a role in the field - top-notch learning experiences in the trenches with seasoned professionals.

We have offices in cities across the nation, and most of our interns can work in or near their homes or school communities. Interoffice collaborations offer enriching opportunities to learn about projects in various regions and disciplines. Hanson's internship program ranked No. 3 in Vault's Best Engineering Internships for 2021!

come see us

*IN-PERSON - October 14 (Thursday)
EST October 14, 2021*

<http://www.hanson-inc.com>



HKA is one of the world's leading consultancy of choice for multi-disciplinary expert and specialist services in risk mitigation and dispute resolution within the capital projects and infrastructure sector.

We also have experience advising clients on the economic impact of commercial and investment treaty disputes and in forensic accounting matters.

come see us

*IN-PERSON - October 14 (Thursday)
EST October 14, 2021*

As trusted independent consultants, experts and advisors, we deliver solutions amid uncertainty, dispute and overrun, and provide the insights that make the best possible outcomes a reality for public and private sector clients worldwide.

<http://www.hka.com>



At HNTB, we are harnessing the power of collaboration and innovation to establish a new vision for the future of mobility across our country. For more than a century, HNTB's spark has connected people and places, expanded opportunity, and left a lasting impact on our communities. Our culture of integrity and inclusion, combined with groundbreaking solutions, has affirmed our reputation and positioned our firm as the industry leader in delivering extraordinary value.

come see us

*IN-PERSON - October 14 (Thursday)
EST October 14, 2021
VIRTUAL - October 15 (Friday) EST
October 15, 2021*

HNTB is committed to delivering extraordinary value for our clients, communities and colleagues. When you join HNTB, you are joining an employee-owned firm founded on the values of integrity, collaboration, personal accountability, respect for others, and the development of all employees.

<http://hntb.com>



come see us

*IN-PERSON - October 14 (Thursday)
EST October 14, 2021*

Holder is a nationwide general contractor with seven offices across the U.S. We work with some of the most innovative companies in the world to lead the industry in building better. Through strategic planning, critical thinking, and open communication we perform the type of work that results in more than 90% repeat client business. We build the best teams to deliver the best outcomes. We are not trying to be the biggest, but consistently striving to be the best by remaining true to our core markets. Our pursuit of excellence drives every effort and every project. Learn, grow, and take on meaningful work on diverse and challenging projects. Be a part of a great workplace where teamwork, connection, and caring are the foundation of what we do every day.

<http://www.holderconstruction.com/>



come see us

*IN-PERSON - October 14 (Thursday)
EST October 14, 2021*

We are a well-established and growing employee-owned general contractor that operates throughout the United States. We have a strong track record of performance in bridge and heavy highway construction with a portfolio of work that includes highly visible and complex projects for Class 1, 2, 3 and commuter rail owners, state and local government agencies, and the Army Corps of Engineers, among many others. We have built a strong reputation as problem solvers. This is a product of empowering our workforce not just to make detailed plans, but also to make the situation adjustments required by the nature of the complicated and complex jobs we take on.

<http://www.icceo.com>



come see us

*IN-PERSON - October 14 (Thursday)
EST October 14, 2021*

The INDOT team consists of more than 3,500 people throughout the state of Indiana. INDOT is committed to providing a meaningful path for each team member as it continues to create and sustain a superior transportation system. The agency continues to foster growth and new ideas that will save lives and money by exploring new methods and partnerships. INDOT offers an exciting and challenging career for established professionals or new employees who want a role in helping to plan, build, maintain, and operate a superior state transportation system that enhances safety, mobility, and economic growth.

<https://www.in.gov/indot/>



come see us

*IN-PERSON - October 14 (Thursday)
EST October 14, 2021*

From design and engineering, to site development and construction, our end-to-end service offering spans the entire infrastructure construction process.

We offer a full spectrum of delivery models including full engineering, procurement, and construction (EPC), turnkey, design-build, balance of plant (BOP), and subcontracting services.

As experts in energy, we have the in-house capabilities to support our customers' infrastructure projects across all phases of the energy lifecycle. IEA is a leading infrastructure construction company with specialized renewable energy and heavy civil expertise.

<https://iea.net/>



J.A. Watts, Inc., commonly known as JWI, was founded on the belief that a design and construction professional services firm could employ down-to-earth, experienced professionals who go above and beyond for clients. This belief is built into who we are and what JWI continues to be.

Today JWI provides cost-effective access to any assignment, anywhere in the world. We are a growing, woman-owned business with over 70 employees working across the United States from Chicago to Dallas, and from Atlanta to San Francisco. We remain known for treating clients and employees like family, developing long-term relationships, and providing an energetic, diverse and inclusive workplace.

come see us

*IN-PERSON - October 14 (Thursday)
EST October 14, 2021*

<https://www.jwincorporated.com/>



The JHA engineering team is licensed in multiple states and has extensive experience in the planning, design, permitting, and managing of land development, infrastructure, and water resource projects. In addition to Civil Engineering services, JHA also offers in-house Surveying and Environmental Services.

come see us

*IN-PERSON - October 14 (Thursday)
EST October 14, 2021*

<http://jacobandhefner.com/>



John Burns Construction Company is a family owned construction business that has been in operation since 1906. The main headquarters are in Chicago, Illinois and Dallas, Texas. Our history is one of consistently meeting new challenges, both in the marketplace and in new technology. We work closely with our customers to look for ways to provide them with solutions. What sets us apart from our competition is that we have always and will continue to be persistent problem solvers for our customers and that pledge is carried throughout our business. Over time our motto has been that "our customers not only like us, but they TRUST us!"

John Burns Construction Company successfully delivers General Contracting projects for private developers, local municipalities, various state and federal age...

come see us

*VIRTUAL - October 15 (Friday) EST
October 15, 2021*

<http://www.jbcco.com>

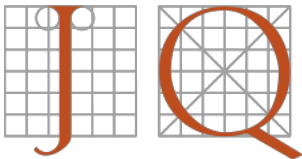


Jones & Henry Engineers has been a successful engineering business for nearly 100 years, focused on water and wastewater engineering. With our expertise in this unique area, our engineers become valued consultants to our clients across Ohio, Indiana and Michigan. In addition to water and wastewater treatment plants and processing knowledge, our team provides engineering, design and construction services for underground collections and distribution infrastructure, master planning, structural, electrical and mechanical engineering, as well as rate studies and aiding our clients in the funding process.

come see us

*IN-PERSON - October 14 (Thursday)
EST October 14, 2021*

<http://www.jheng.com>



come see us

*IN-PERSON - October 14 (Thursday)
EST October 14, 2021*

JQ is a team of professionals providing structural and civil engineering, geospatial and facility performance services within a diverse group of markets. Our team is founded on creative and interpersonal ideals, embracing a level-headed, can-do mode of operating to bring the client's vision to life.

Since 1984, clients have sought JQ's innovation in design and project delivery as much as our leadership. Handling the complexities of project management from multiple offices across Texas, JQ serves clients throughout the southern United States. As a group of creative, engaged and people-focused professionals, JQ offers more than just access to forward-thinking design and the latest technology - we're a nimble, resourceful firm renowned for exceeding expectations.

<http://www.jqeng.com>



come see us

*IN-PERSON - October 14 (Thursday)
EST October 14, 2021*

Keller is the world leader in geotechnical construction and deep foundations. With a North American presence of over 100 years, we operate as the market leader with over 50 offices throughout the US and Canada. By connecting global resources and local experience, Keller develops innovative, practical, and cost-effective solutions to geotechnical challenges. Our values of integrity, collaboration, and excellence enable us to lead the industry in providing the optimal solution for our clients.

Our employees are the key to our success. We give our employees the tools they need to be successful in their careers. Our employees have access to a global network of industry experts and thought leaders. Join Keller and experience all we have to offer.

<https://www.keller-na.com/welcome-keller>



come see us

*IN-PERSON - October 14 (Thursday)
EST October 14, 2021*

KERAMIDA supports clients nationwide and abroad in both the public and private sectors with a full range of environmental compliance, engineering, remediation, building decommissioning, health & safety, energy use, risk management and training services. Many KERAMIDA principals have over 25 years of experience and are nationally known experts, lecturers, authors and, expert witnesses. Established in 1988, KERAMIDA is headquartered in Indianapolis, Indiana.

<http://www.keramida.com>



come see us

*IN-PERSON - October 14 (Thursday)
EST October 14, 2021*

Keystone Construction Corporation was founded by President and CEO, Ersal Ozdemir and is one of the most successful and fastest-growing construction companies in the Midwest. The company has earned a distinct reputation for excellence along with an impressive record for consistently bringing in large scale projects on-time and within budget. Our construction professionals value client objectives and always keep their best interest a priority.

Vision Statement: We are determined to lead the way as highly respected and diverse companies that provide innovative solutions, service and value to clients and communities on a global scale.

Mission Statement: To be the leader in providing an extraordinary construction experience by exceeding client expectations, leading to lasting partnership...

<http://www.keystone-corp.com>

Kimley»Horn

Expect More. Experience Better.

Kimley-Horn is one of the nation's most comprehensive and best respected civil engineering and land planning firms. With staff in over 90 offices, we offer full consulting services in a wide range of disciplines in both the private and public sectors:

- One of Fortune's "100 Best Companies to Work For"
- Technical and professional development

come see us

*IN-PERSON - October 14 (Thursday)
EST October 14, 2021*

<https://www.kimley-horn.com>



KJG Engineering is a division of KJG Architecture, Inc. located in West Lafayette just 5 miles from the Purdue University campus. Since our inception in 1997, KJG has steadily grown to become a multidiscipline firm with four divisions: Structural Engineering, Commercial Architecture, Residential Architecture, and Interior Design. We complete hundreds of projects every year, including many out-of-state.

come see us

*IN-PERSON - October 14 (Thursday)
EST October 14, 2021*

<https://www.kjgengineering.com>

Klein&Hoffman

With more than 60 years of expertise helping clients investigate, plan and design structurally sound buildings, Klein and Hoffman delivers creative solutions to address our clients' real estate needs. We are a team of structural engineers and restoration architects delivering projects that expand the functionality of buildings and facilities. Our reputation as a client-focused organization is reflected in the number of returning clients and referrals we receive from partnerships established with owners, architects, developers, and other engineering firms.

come see us

*VIRTUAL - October 15 (Friday) EST
October 15, 2021*

<http://www.kleinandhoffman.com>



KPFF - With over 1,200 employees nationwide, KPFF is an engineering-focused company that is organized around the philosophy that great people thrive in an environment that enables freedom and independence while also providing the necessary amount of accountability and support. KPFF Special Projects - Our work generally leans toward heavy civil, structural, industrial, and waterfront infrastructure throughout the US. We are frequently tasked with solving unusual, multi-discipline challenges that require an innovative and team-oriented approach.

come see us

*VIRTUAL - October 15 (Friday) EST
October 15, 2021*

<http://www.kpff.com>



Lane is the innovative leader of transportation and heavy civil construction products and services that connect and improve the world's communities. We are guided by our values-based culture and the dedication of the Lane employee family that has helped us succeed for well over a century. We consistently deliver superior customer satisfaction, and are committed to a safe and rewarding work environment that is essential to long-term success for our owners, partners and employees.

come see us

*IN-PERSON - October 14 (Thursday)
EST October 14, 2021*

<https://www.laneconstruct.com/>



Langan provides an integrated mix of engineering and environmental consulting services in support of land development projects, corporate real estate portfolios, and the energy sector. The firm, which has more than 1,200 employees in 30 US offices and multiple international locations, brings measurable value to its diverse client base, which includes developers, property owners, public agencies, corporations, and institutions around the world.

come see us

*VIRTUAL - October 15 (Friday) EST
October 15, 2021*

<https://www.langan.com/>



LFA creates projects that people and communities value. We specialize in delivering innovation and vision in Transportation, Bridges and Structural, Water Resources, Survey, Construction Inspection and Civil Site from concept to completion. Collaboration and team work comprise the foundation of everything we do. LFA strives to deliver the best design solutions with every project.

come see us

*IN-PERSON - October 14 (Thursday)
EST October 14, 2021*

<http://www.lawson-fisher.com>



come see us

*VIRTUAL - October 15 (Friday) EST
October 15, 2021*

Lendlease is a global organization. Our Construction Division delivers large commercial projects (high-rises, hospitals, convention centers, research facilities, etc.) as a General Contractor. The construction team also integrates with our development team to deliver our own projects.

We promote a diverse and inclusive environment, which fosters our innovative culture. A select group of graduating students, who stand out as potential future leaders at Lendlease, are hired each year and put them into our accelerated program. The path to selection commonly starts with first being a Summer Intern at Lendlease. We focus on hiring Juniors for Internships, or students in Graduate programs with 1 year to go. Opportunities can be found in Chicago, Philadelphia, Princeton, NY and SF.

<http://www.lendlease.com/us/college>



come see us

*IN-PERSON - October 14 (Thursday)
EST October 14, 2021*

Founded in 1966, LJB Inc. is a national engineering firm driven to think bigger. We diligently execute ideal solutions alongside public and private owners and their builders responsible for land, the environment and infrastructure: roads, bridges, buildings, utilities and engineered safety systems. We serve clients in six primary markets: commercial/retail, education, healthcare, industrial/manufacturing, federal, and state/local government, and LJB's projects are located worldwide.

<http://www.ljbinc.com>



come see us

*IN-PERSON - October 14 (Thursday)
EST October 14, 2021*

Lochmueller Group is headquartered in Evansville, Indiana, and is a regional engineering, planning, and environmental consulting firm with an emphasis on infrastructure. We provide multi-disciplined services for a variety of public agencies and private entities, including transportation & water resource design; environmental analysis & permitting; construction engineering & inspection; traffic engineering & transportation planning; and land acquisition & appraisal.

<https://www.lochgroup.com>



come see us

*IN-PERSON - October 14 (Thursday)
EST October 14, 2021
VIRTUAL - October 15 (Friday) EST
October 15, 2021*

Manhard Consulting is a full-service consulting civil engineering, surveying, water resources, and land planning firm offering comprehensive professional services. After nearly four decades, the Manhard name is synonymous with engineering excellence. We continue to lead the industry as one of the most progressive and technologically advanced civil engineering firms in the country.

Our diverse client list ranges from the number one company on the Fortune 500 list to small, privately-held developers. Manhard's current workload includes retail/commercial, mixed-use, transportation, industrial, municipal, residential, educational, healthcare and office developments across the country.

<http://www.manhard.com>



come see us

*IN-PERSON - October 14 (Thursday)
EST October 14, 2021
VIRTUAL - October 15 (Friday) EST
October 15, 2021*

MATT Construction is a family- and employee-owned general contractor that has built some of the most memorable buildings in the western states.

<https://www.mattconstruction.com/>



For over 30 years, Maxwell Construction has leveraged our resources and experiences in a broad range of construction disciplines to give our clients the most value possible. We continue to strive towards excellence with each project by keeping our core values alive, that is to C.A.R.E. (Customer satisfaction, Attitude matters, Respect for everyone, and Excellence in reputation). Our diverse team thinks like Owners and delivers unmatched problem-solving capabilities, which allows us to meet this goal. Maxwell has extensive experience in industrial facilities, education facilities, multifamily apartments, medical facilities, historic renovations, restaurants, retail centers, banking facilities, and senior housing facilities. No matter what the delivery method, Design Build, Design Bid Bu...

come see us

*IN-PERSON - October 14 (Thursday)
EST October 14, 2021
VIRTUAL - October 15 (Friday) EST
October 15, 2021*

<http://www.maxwellbuilds.com/>



As the largest sole provider of healthcare facilities services in the U.S., Medxcel delivers operational savings, reduces supply chain costs, and increases compliance scores by optimizing current resources and improving the overall healthcare environment.

come see us

*IN-PERSON - October 14 (Thursday)
EST October 14, 2021*

Medxcel has a dedicated focus on our people and customers, as well as providing tools, processes, support resources, data analytics and insource strategies that drive results. We refer to this focus as iSERV, which represents Inspired People, Service Excellence, Engagement, Reach and Value Optimization. Multiplying your facility's efficiencies while reducing your spend isn't only doable, but sustainable.

<https://www.medxcel.com/home>



Messer Construction Co. is an award-winning construction manager and general contractor that provides leadership for complex commercial building projects. An employee-owned company, Messer now stands as one of the nation's leading health care and higher education builders. Messer's footprint has grown to nine regional offices located across the Midwest and Southeast: Raleigh & Charlotte, North Carolina; Columbus, Cincinnati, and Dayton Ohio; Louisville and Lexington Kentucky; Indianapolis, Indiana; and Knoxville & Nashville, Tennessee. Messer employees live where they work, resulting in the company's sustained commitment to building better communities.

come see us

*VIRTUAL - October 15 (Friday) EST
October 15, 2021*

<http://www.messer.com>



For 70 years, Middough has succeeded in building a reputation of trusted performance as a best-in-class engineering, architecture and management consulting firm. Today, in addition to consulting services, we provide integrated, highly flexible, full-service project delivery and support services. Our history of achieving our clients' goals begins with our talented people. Through an innovative and collaborative culture, we successfully execute complex projects earning trust from businesses. Are you looking to challenge yourself in your career? With nine locations throughout the US, our project teams are accessible and conveniently located for our clients' success. Middough is proud to have been named one of the Top Place Work Places in our Toledo and Cleveland, Ohio locations.

come see us

*IN-PERSON - October 14 (Thursday)
EST October 14, 2021*

<https://www.middough.com/>

Midwestern Engineers, Inc.



Midwestern Engineers, Inc. is a full service, multi-discipline, consulting engineering firm. Established in 1959 in Southwestern Indiana; the firm has grown to serve the entire Hoosier State with full-service offices in Indianapolis and Loogootee. Midwestern Engineers, Inc. provides our clients with design solutions to build infrastructure and promote the prosperity in their own communities.

come see us

*IN-PERSON - October 14 (Thursday)
EST October 14, 2021*

<http://www.midwesterneng.com>



MILESTONE CONSTRUCTION, INC.

Founded in 1989, Milestone Construction, Inc has had the opportunity to work with many wonderful clients on new homes, home renovations and additions, new commercial buildings, schools, churches, and other construction projects. We strive to provide exceptional value and service for our clients and community. Owner satisfaction is our first priority, and we specialize in helping customers turn their vision into reality.

Milestone Construction is dedicated to the quality design and construction of residential and commercial projects. We complete each project by utilizing a "team effort" approach between the owner, designer, architect, and the contractor. We are involved in community organizations which promote the construction industry, and we continually update our knowledge of design ...

come see us

*IN-PERSON - October 14 (Thursday)
EST October 14, 2021*

<http://milestoneconstruction.us>



ms consultants, inc. engineers, architects, planners

ms consultants, inc. is a multidiscipline engineering, architecture and planning firm providing full services to public and private clients throughout the United States.

Offices are currently located in Ohio, Indiana, Pennsylvania, West Virginia and North Carolina.

Achieve a successful career by joining ms consultants, a consistently ranked ENR top 500 consulting firm.

come see us

*IN-PERSON - October 14 (Thursday)
EST October 14, 2021*

<http://www.msconsultants.com>



MUSSETT NICHOLAS ASSOCIATES ENGINEERS + ARCHITECTS

Mussett Nicholas & Associates is a privately held Engineering and Architecture Consulting Firm with offices in Indianapolis, IN and Raleigh, NC. We offer clients across a broad range of industries expertise in every phase of design, construction and project management including mechanical, electrical, and architectural services. Our business focus is primarily facilities engineering assisting our clients in the development of mechanical design for plumbing and HVAC systems for construction projects and electrical design for power distribution systems, interior/exterior lighting systems, fire alarm, voice/data, sound, or security systems for construction projects.

come see us

*IN-PERSON - October 14 (Thursday)
EST October 14, 2021*

<https://www.m-n-a.com>



About us

Our history began as a commercial real estate developer specializing in industrial and multi-family development. Since our inception in 2012; NorthPoint has grown to become a family of seven companies spanning several industries.

come see us

*IN-PERSON - October 14 (Thursday)
EST - October 14, 2021*

"We truly believe, and I'm convinced, we have some pretty incredible assets. But those assets have all come from our people." - Nathaniel Hagedorn | CEO. He describes our "secret sauce" as the commitment from each one of our employees to live into the Core Values. It is this company wide alignment that has created a culture around these Core Values. We didn't just write them; we truly believe and live them everyday!

<http://beyondthecontract.com>



Established in 1975 and acquired in 2007, Oakley is one of the leading product design and sport performance brands in the world, chosen by world-class athletes to compete at the highest level possible. The holder of more than 850 patents, Oakley is also known for its innovative lens technologies, including PRIZMTM. Oakley extended its position as a sports eyewear brand into apparel and accessories, offering men's and women's product lines that appeal to sport performance, active and lifestyle consumers. As of December 31, 2018, the Group operated 361 Oakley "O" stores worldwide (including 81 franchised locations).

come see us

*VIRTUAL - October 15 (Friday) EST
October 15, 2021*

<https://www.luxottica.com/en/eyewear-brands/oakley>



OHM Advisors is an integrated engineering, architecture and planning firm committed to advancing communities. We devote our public and private sector expertise, forward thinking and insightful counsel to enhancing the built environment and the natural world. At OHM Advisors, we believe in holistic thinking and services tailored to meet our clients' ambitions.

come see us

*VIRTUAL - October 15 (Friday) EST
October 15, 2021*

<https://www.ohm-advisors.com>



Pape-Dawson Engineers, Inc. was established in 1965 in San Antonio. Since then, we have opened offices in Austin, New Braunfels, Houston, Fort Worth, and Dallas to more effectively serve clients throughout the state. Our staff of 650+ professionals offers civil engineering consulting services in the areas of land development, transportation, water resources, surveying, environmental, hydrology/hydraulics, and GIS.

come see us

*IN-PERSON - October 14 (Thursday)
EST - October 14, 2021
VIRTUAL - October 15 (Friday) EST
October 15, 2021*

We view each project and client interaction as an opportunity to fulfill our longstanding mission: to be the most respected engineering firm in our geographic and technical areas of practice.

<https://pape-dawson.com>



About Parsons

Parsons is a technology-driven engineering services firm with more than 70 years of experience in the engineering, construction, technical, and professional services industries. The corporation is a leader in many diversified markets with a focus on infrastructure, defense, security, and construction. Parsons delivers design/design-build, program/construction management, systems design/engineering, cyber/converged security, and other professional services packaged in innovative alternative delivery methods to federal, regional, and local government agencies, as well as to private industrial customers worldwide.

come see us

*IN-PERSON - October 14 (Thursday)
EST October 14, 2021*

Diversity at Work

Currently, Parsons employees are engaged in projects in 27 countries. These dedicated workers speak more than 80

<http://www.parsons.com>



Perry & Associates is a structural engineering firm located in downtown Chicago. We provide structural engineering services for a wide variety of clients including architects, building management companies, private businesses and individuals. This position is a full-time, entry-level structural engineering opportunity. The chosen candidate will work both individually with the guidance of other engineers and on teams to complete larger projects. Typical projects include the design, analysis and evaluation of both new and existing building structures and range from small, residential repairs to the construction of multi-million dollar facilities.

come see us

*VIRTUAL - October 15 (Friday) EST
October 15, 2021*

<http://www.perryllc.com>



POWER Engineers is a global consulting engineering firm specializing in the delivery of integrated solutions for energy, food and beverage facilities, environmental and federal markets. POWER offers complete multidiscipline engineering, environmental and program management services. Founded in 1976, we are an employee-owned company with more than 2,900 employees and 45 offices throughout the United States and abroad. For more information, please visit www.powereng.com.

come see us

*VIRTUAL - October 15 (Friday) EST
October 15, 2021*

<http://www.powereng.com>



Since 1993 Ragle Incorporated has completed numerous construction projects in the States of Indiana , Kentucky, Texas and Illinois. Ragle, Inc. concentrates primarily on highway and bridge construction.

We value our reputation for meeting contractual commitments while achieving economic results for our clients. Ragle, Inc. uses their highly experienced personnel to complete projects to the owner's satisfaction.

come see us

*IN-PERSON - October 14 (Thursday)
EST October 14, 2021*

Ragle, Inc. delivers competitive quality construction work; due to the company's ability to complete the majority of work with its own forces. Our team of highly specialized professionals has years of experience successfully completing complex and demanding projects. We have years of experience in estimating, scheduling, engineering and budgeting.

<http://www.ragleinc.com>



Related California is a fully-integrated real estate firm that has completed over 17,000 residences and currently has more than 2,700 affordable and 7,000 market rate units in pre-development. We have a history of award-winning developments recognized for achievements in design, construction, sustainability and property management.

come see us

*VIRTUAL - October 15 (Friday) EST
October 15, 2021*

<https://www.relatedcalifornia.com/>



come see us

*IN-PERSON - October 14 (Thursday)
EST October 14, 2021
VIRTUAL - October 15 (Friday) EST
October 15, 2021*

RES (Renewable Energy Systems) is the world's largest independent renewable energy company with a 19 GW portfolio and the expertise to develop, engineer, construct, finance, and operate projects around the globe. Driven by our vision to create a future where everyone has access to affordable zero carbon energy, we leverage decades of experience and our industry-leading expertise to deliver results for our clients that surpass expectations in wind, solar, energy storage, and transmission & distribution. We're the ideal partner for renewable investors, asset owners, utility companies, commercial and industrial clients, project developers and communities seeking renewable energy solutions. We exist to serve our clients - they are at the heart of everything we do. Our approach means we del...

<http://www.res-group.com/en>



Resolution Group, Inc.

come see us

*IN-PERSON - October 14 (Thursday)
EST October 14, 2021*

Resolution Group, Inc. (RGI) is an Indianapolis based DBE/WBE civil engineering firm founded in 2008 specializing in design, environmental, survey, right-of-way and inspection services for contractors, consultant partners and public/private sector clients. RGI provides the following list of services: Roadway and Bridge Design, Drainage/Hydraulics, Utility Coordination, Permitting, Environmental Documentation, Construction Inspection, Storm Water Quality Control Plans, Erosion Control Design, Level 1&2 Construction Storm Water Inspection, MS4 Coordination and Compliance, Aviation (Landside), Site Development, Topographic Survey, Right-of-Way Engineering, PM for ROW Acquisition Services

<https://www.resogrp.com/>



RockSol Consulting Group, Inc., a Colorado based company, provides civil engineering services for transportation projects, including highway and trail design, bridge and structural engineering, geotechnical engineering, and environmental services across the Western United States. We also provide construction management, inspection, and materials testing services for public agencies. With a staff of over 250, RockSol offers a unique team of professional and technical staff with a wealth of experience and knowledge. RockSol has in-house capabilities for performing standard materials laboratory testing, all of which is conducted under the required industry and regulatory procedures in our AMRL and CCRL accredited laboratories.

come see us

*VIRTUAL - October 15 (Friday) EST
October 15, 2021*

<http://www.rocksol.com>



come see us

*IN-PERSON - October 14 (Thursday)
EST October 14, 2021*

Since 1954, we have been committed to providing our clients with exemplary engineering and architecture services. With more than 60 years of experience bringing our clients' ideas to reality, RQAW is the authority on producing Revolutionary, Quintessential, Award-Winning projects. Our expertise is growing and evolving all the time. Our respect for the uniqueness of each of our clients and their projects shows through in all we do, as we approach each project with skill and creativity

Our Comprehensive Services include:

- Water/ Wastewater/ Stormwater
- Architecture & Planning
- Site/Civil Engineering
- Transportation Engineering
- Road Design & Bridge Design

<http://www.rqaw.com>



STRUCTURAL ENGINEERS

come see us

*IN-PERSON - October 14 (Thursday)
EST October 14, 2021
VIRTUAL - October 15 (Friday) EST
October 15, 2021*

Ruby+Associates is a WBE-Certified structural engineering firm devoted to serving the construction industry. We help our clients through our core services of Construction Engineering, Building Design, Heavy Lift Engineering, Erection Engineering, Connection Design, Building Analysis/Reinforcement and Design/Detail. We serve top contractors, fabricators, erectors and architects.

We believe that hand-picking the best and the brightest recruits from the nation's top programs - and helping them to think critically and creatively on behalf of our clients is the key to our success. We invest in our people through technical training, stretch assignments and client interaction. We foster a trust-based culture that emphasizes leadership and camaraderie.

<https://www.rubyandassociates.com>



We are hands-on, open-minded, collaborative structural engineers. Our clients partner with us for our collaborative structural engineering services.

We were founded in 1976 to be a different kind of structural engineering firm.

The way we approach design + collaboration is why our clients partner with us.

come see us

*IN-PERSON - October 14 (Thursday)
EST October 14, 2021*

Schaefer is an 80+ employee, privately owned structural engineering consulting firm based in Cincinnati Ohio, with additional offices in Columbus Ohio and Phoenix Arizona.

<https://schaefer-inc.com/>



come see us

*IN-PERSON - October 14 (Thursday)
EST October 14, 2021*

Schmidt Associates is an Indianapolis based architecture and engineering firm. We help educational, lifestyle, workplace, and community clients optimize their facilities and systems through analysis and strategic implementation. Acting out of a culture of Servant Leadership, we put the needs of our clients first. We are known for providing Better Foresight, Better Insight, and for being Better On-Site throughout projects. We strive to make each project unique and reflective of the culture and values of the Owner, creating plans and spaces for improved efficiency.

<https://schmidt-arch.com>

**SIMPSON
GUMPERTZ
& HEGER**

come see us

*IN-PERSON - October 14 (Thursday)
EST October 14, 2021*

Simpson Gumpertz & Heger (SGH) designs, investigates, and rehabilitates constructed works in the United States, Canada, and in more than thirty additional countries. Our goals are simple: earn the lasting trust of our clients, gain the respect of our most capable peers, and further the standards of practice in all areas of our profession. Our industry-recognized experts with diverse specialties

- collaborate with clients and project team members,
- engage our extensive expertise,
- focus on delivering successful results, and
- respond to project challenges.

<https://www.sgh.com/>



come see us

*IN-PERSON - October 14 (Thursday)
EST October 14, 2021*

SJCA offers a variety of services including; bridge design, roadway design, bridge inspection, underwater inspection, construction inspection, survey, right-of-way engineering, and utility coordination.

For over 20 years, SJCA has excelled at providing premier leadership to our clients. Our four owners dedicate countless hours focusing on the satisfaction of our clients and the development of our employees. As we continue to grow, the leadership team at SJCA has stayed consistent with our small business values, without compromising quality.

In 2020 SJCA acquired Green 3, a full-service environmental consulting firm that offers ecological surveys, wetland mitigation, waterway permitting, environmental document preparation, and historical and archaeological investigations.

<http://www.SJCAinc.com>

SKANSKA

come see us

*VIRTUAL - October 15 (Friday) EST
October 15, 2021*

Skanska is one of the world's leading construction and development companies. Skanska's core operations in the U.S. include building construction, civil infrastructure and developing self-financed commercial properties. In 2020, construction in the U.S. generated \$6.5 billion in revenue, and as a developer in the U.S., Skanska has invested a total of \$2.8 billion in commercial and multi-family projects. With U.S. headquarters in New York City, Skanska has 29 offices with 7,600 employees nationwide. An industry-leading innovator in both safety and project execution, Skanska offers competitive solutions for traditional and complex assignments that build a more sustainable future for our customers and communities. Global revenue of parent company Skanska AB, headquartered in Stockholm and...

<https://skanska.com>



come see us

*VIRTUAL - October 15 (Friday) EST
October 15, 2021*

Strand Associates, Inc.® is a full service consulting engineering firm with a staff of 445 and expertise in civil, environmental, transportation, structural, electrical, instrumentation, and mechanical engineering. Established in 1946, our clients include municipalities, public agencies, and private industries. Our firm has 10 locations nationwide, including Phoenix, AZ; Brenham, TX; Columbus, IN; Lexington and Louisville, KY; Joliet, IL; Cincinnati and Columbus, OH; Madison (Headquarters) and Milwaukee, WI.

When considering a position at Strand Associates, Inc.®, please visit our website to get a feeling of who we are. Strand is an equal opportunity/affirmative action employer offering excellent compensation and fringe benefits package.

<http://www.strand.com>



Since our founding in 1888, Swinerton's success has been built on a foundation of shared values. We are a 100% employee-owned company, so our people have a personal interest in the success of every project. With a culture of collaboration, we work toward a common purpose: to be the preferred builder and trusted partner in every market we serve, proudly leading with integrity, passion, and excellence.

come see us

*IN-PERSON - October 14 (Thursday)
EST October 14, 2021*

<http://swinerton.com>



Terracon is a 100 percent employee-owned consulting engineering firm providing quality services to clients. Since 1965, Terracon has evolved into a successful multi-discipline firm specializing in environmental, facilities, geotechnical, and materials services. Terracon currently has more than 5,000 employees in more than 150 offices with services available in all 50 states. Terracon's growth is due to valued employees exceeding expectations in client service and growing their careers with new and exciting opportunities in the marketplace.

Terracon's vision of "Together, we are best at people" is demonstrated through our excellent compensation and benefits package.

come see us

*IN-PERSON - October 14 (Thursday)
EST October 14, 2021*

<http://www.terracon.com>



Tylk Gustafson Reckers Wilson Andrews, LLC was formed in July 2000. TGRWA evolved from the firm of Tylk, Gustafson and Associates, Inc. whose roots date back to 1979. The TGRWA Principals are Roger Reckers, Kevin Wilson, Jon Andrews and David Nickell.

TGRWA has a record of continuing growth, offering a broad spectrum of structural engineering services to its clients. The success and reputation of the firm are the direct result of the individual efforts and the close cooperation by all TGRWA Employees and Principals. We strive to continue these efforts and adhere to the highest professional standards and ideals. Ultimately, we provide the client with structural engineering designs and solutions that are both innovative and cost effective.

come see us

*IN-PERSON - October 14 (Thursday)
EST October 14, 2021*

<https://tgrwa.com/>



Since its inception in 1953, Beaver has provided the highest quality product at a competitive price with the highest level of service. Named after "Natures Engineer", Beaver defines industry standards for earthmoving and construction projects and has never lost sight of its core values that were established over a half century ago: Safety, Quality, Loyalty, Integrity, Pride, Customer Focus, and Community Service.

Beaver outperforms other companies in earthwork, highway construction, cast-in-place concrete, underground utilities, demolition, and site-related civil services.

At Beaver, our people are our greatest asset. We combine ongoing training and the development of industry best practices with the depth of experience and longevity of our core workforce.

come see us

*VIRTUAL - October 15 (Friday) EST
October 15, 2021*

<https://www.beaverexcavating.com/>



Since our founding in 1987, Dennis Group's sole focus has been designing and building food processing facilities. We've developed a talented, multi-disciplined in-house team that can execute full design-build projects from planning through start-up, or act as an extension of your engineering team, assisting in specific areas.

come see us

*VIRTUAL - October 15 (Friday) EST
October 15, 2021*

<http://dennisgroup.com>



The Walsh Group is a fourth-generation family-owned company providing design, build, finance, operation and activation services. We operate as Walsh Construction, Archer Western and Walsh Canada across 18 regional offices. Consistently ranked as one of the largest contractors in North America, we are delivering some of the most complex and challenging projects in the building, transportation and water markets. Our 8,000 employees are united by a shared dedication to deliver exceptional customer service, while upholding the highest standards of ethics, quality and safety.

come see us

*IN-PERSON - October 14 (Thursday)
EST October 14, 2021*

<http://www.walshgroup.com>



Thieneman Construction, Inc. (TCI) is a local, self-performing general contractor dedicated to exceeding client expectations by safely building high quality projects, meeting project deadlines, and offering competitive pricing.

Since Its establishment in 1999, TCI has built more than 220 jobs with a value of over \$400 million. Through this experience, our staff has developed the expertise and skills to tackle the most challenging and complex projects.

come see us

*IN-PERSON - October 14 (Thursday)
EST October 14, 2021*

<http://www.thienemanconstruction.com>



Thompson Thrift is a national leader in the development, construction, and management of upscale apartment communities and luxury leased homes across the country.

As a full-service real estate development company, we have a wide variety of in-house capabilities that enable us to develop luxury, Class A communities in suburban growth markets, as well as head development, construction, and property management across the country. Headquartered in Indianapolis and Terre Haute, IN, with remote offices located in Phoenix, AZ, and Houston, TX, we offer multiple opportunities to positively impact communities on a national level.

come see us

*IN-PERSON - October 14 (Thursday)
EST October 14, 2021*

<https://www.thompsonthrift.com/>

Thornton Tomasetti

Thornton Tomasetti provides engineering design, investigation and analysis services to clients worldwide on projects of every size and level of complexity. We address the full life cycle of structures through our seven integrated practices. Founded in 1956, today Thornton Tomasetti is an 850-person organization of engineering, architecture, sustainability and support professionals collaborating from offices across the United States and in Asia-Pacific, Europe, Latin America and the Middle East. As a 100% employee-held company, we focus on being nimble and adapting to our changing industry to ensure the continued success of our clients.

come see us

VIRTUAL - October 15 (Friday) EST
October 15, 2021

<http://www.thorntontomasetti.com>



Thorson • Baker + Associates
CONSULTING ENGINEERS

Thorson • Baker + Associates (TBA) was founded in 1993 to provide engineering consultation and design services for the building construction industry. TBA offers structural, mechanical, and electrical engineering design services nationwide with professional registration in forty-nine states, the District of Columbia, Puerto Rico and Alberta, British Columbia, & Ontario, Canada. Civil engineering services are offered throughout the midwest.

come see us

IN-PERSON - October 14 (Thursday)
EST October 14, 2021

<http://www.thorsonbaker.com/>



Tippmann Group is comprised of three companies- Interstate Warehousing, Tippmann Construction, and Tippmann Properties.

Interstate Warehousing is one of the Top Ten Cold Storage Warehousing companies in the US, offering more than 100M cf of refrigerated and frozen warehouse space.

Tippmann Construction is a design/build general contractor for temperature controlled processing and distribution facilities across the US, primarily serving all segments of the food industry.

Tippmann Properties owns and manages nearly 3.6M sf of office, industrial, and commercial real estate throughout Indiana and the US.

come see us

IN-PERSON - October 14 (Thursday)
EST October 14, 2021

<https://www.tippmanngroup.com/>



come see us

IN-PERSON - October 14 (Thursday)
EST October 14, 2021

Since 1991, we have fulfilled the engineering needs of clients by providing a broad range of innovative solutions. Our multi-discipline firm provides a variety of services tailored to our clients needs. Staffed with registered engineers and landscape architects, TLF provides comprehensive services such as, site engineering, structural engineering, structural design, project planning, construction coordination, rehabilitation and restoration of deteriorated buildings, building design, and project management.

<https://www.tlf-engineers.com>



EXPERIENCE | Transportation

come see us

VIRTUAL - October 15 (Friday) EST
October 15, 2021

TranSystems brings innovative consulting, engineering and architectural solutions to solve the nation's transportation infrastructure challenges. We are dedicated to enhancing and improving the movement of goods and people by creating an integrated transportation system around four key market sectors - freight rail and intermodal, passenger rail and transit, federal, states and municipalities, and aviation.

A mid-sized firm, comprised of 900 professionals in more than 35 offices throughout the U.S., TranSystems allows clients access to an experienced team of industry professionals with subject matter expertise in a variety of disciplines, along with the capabilities to provide support through the entire program lifecycle from problem-solving and planning through design and construct...

<http://www.transystems.com>



come see us

IN-PERSON - October 14 (Thursday)
EST October 14, 2021
VIRTUAL - October 15 (Friday) EST
October 15, 2021

Traylor Bros., Inc. is a highly-respected heavy civil construction company working on some of the biggest, most technically challenging bridge, marine, and underground jobs in North America.

William F. Traylor founded Traylor Bros. in 1946, finding success by taking on - and succeeding with - extremely challenging projects. His combination of honesty, courage, and innovative abilities are the traits that embody the firm to this day.

Our Vision is to be the most respected, preferred and consistently performing heavy-civil contractor in North America.

Our Mission is to excel at constructing complex infrastructure safer, better, and faster by engaging the entrepreneurial and innovative spirit of our team members and providing limitless opportunity for personal and professional growth ...

www.Traylor.com



come see us

IN-PERSON - October 14 (Thursday)
EST October 14, 2021
VIRTUAL - October 15 (Friday) EST
October 15, 2021

Turner is a North America-based, international construction services company and is a leading builder in diverse market segments. The company has earned recognition for undertaking large, complex projects, fostering innovation, embracing emerging technologies, and making a difference for their clients, employees and community.

With a staff of 10,000 employees, the company completes \$12 billion of construction on 1,500 projects each year. Turner offers clients the accessibility and support of a local firm with the stability and resources of a multi-national organization.

<https://turnerconstruction.com>



come see us

IN-PERSON - October 14 (Thursday)
EST October 14, 2021

United Consulting provides quality service their clients can depend on. With professional engineers, planners, surveyors, environmental specialists, construction inspectors, land acquisition specialists, technicians and other associates, United Consulting provides the resources needed to complete projects from start to finish. Our outstanding resources combined with our high standard of excellence guarantees that we will provide Quality Service On Time - Every Time.

<https://ucindy.com/>



come see us

*VIRTUAL - October 15 (Friday) EST
October 15, 2021*

The Mission of the Corps is to deliver solutions and manage resources supporting regional and national requirements through an expert team of multidisciplinary professionals utilizing best engineering practices and strategic partnerships to reduce disaster risk, strengthen the economy and support national security.

Our vision to be a professional organization that provides quality solutions for the region and nation with a focus on continual improvement, workforce development and efficient mission execution.

<http://www.lrl.usace.army.mil/>



come see us

*IN-PERSON - October 14 (Thursday)
EST October 14, 2021
VIRTUAL - October 15 (Friday) EST
October 15, 2021*

Civil Engineering, Construction Management, and Surveying

<http://www.usiconsultants.com>



come see us

*VIRTUAL - October 15 (Friday) EST
October 15, 2021*

As one of the largest structural engineering design firms in the Southeastern US, we are committed to the mentoring and professional development of our staff. We maintain a creative and collaborative work environment to design large and challenging projects.

<http://www.uzuncase.com>



come see us

*VIRTUAL - October 15 (Friday) EST
October 15, 2021*

V3 Companies is an employee-owned, multidisciplinary firm offering civil engineering, natural resources, environmental, landscape architecture, contracting, planning, and surveying services. We were founded in 1983 & continue to grow our team of approximately 250 professionals among our offices in IL (Chicago and Woodridge), IN (Indianapolis and Carmel), OH (Columbus), Canada (Sherwood Park) and Haiti (Port-Au-Prince). The market sectors we serve include: transportation, local government, education, healthcare, office & industrial, residential, retail, parks & forest preserves, utility and energy and international development. We offer challenging work assignments and long-term career growth in a predominately "promote from within" environment. We also have a great compensation packag...

<http://www.v3co.com>



VINCI Construction LLC is a subsidiary of VINCI Construction Grands Projets, located in Alexandria, Virginia. The scope of the company is to design and build major civil engineering structures and projects, through the company's high level of expertise, engineering skills, and expert project management abilities. We focus on projects for which we can bring clear and strong added value by providing highly skilled and competitive professional service in the construction field.

come see us

*IN-PERSON - October 14 (Thursday)
EST - October 14, 2021*

The "zero accident" culture in daily practice in all our activities. Safety is among VINCI Construction Grands Projets' priority values. For construction sites to be safe spaces and the lives of men and women who work there to be respected, the "Safety first" policy applies to everyone at their own level.

<https://vinci-construction.com/en/>



come see us

*IN-PERSON - October 14 (Thursday)
EST - October 14, 2021*

VS Engineering (VS) is an Indiana-owned and operated professional engineering consulting firm that provides cost-effective solutions to civil engineering problems routinely encountered by municipalities, counties and the private sector. Founded in 1980, VS specializes in engineering services for all phases of Civil, Transportation, Environmental, Structural, Surveying and Traffic projects. The VS corporate office is located in Indianapolis, Indiana with regional offices in Bloomington, Evansville, Fort Wayne, Lafayette and LaPorte. Our talented staff of engineers, land surveyors and other built-environment and construction professionals are always ready and eager to serve you.

VS is a certified Minority Business Enterprise (MBE), and Disadvantaged Business Enterprise (DBE).

<http://www.vsengineering.com>

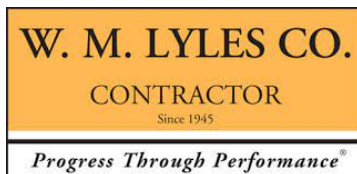


come see us

*IN-PERSON - October 14 (Thursday)
EST - October 14, 2021*

W-T has been operating since 1971, engaging in the disciplines of Civil Engineering, Heating, Ventilation and Air Conditioning, Plumbing, Electrical and Fire Protection Engineering, Land Surveying, and Telecommunications Engineering. We have been involved in various projects including apartment buildings for the elderly, libraries, financial and religious institutions, gas stations, restaurants, cell sites, office buildings, park district projects and healthcare centers.

<http://www.wtengineering.com>



come see us

*VIRTUAL - October 15 (Friday) EST
October 15, 2021*

W. M. Lyles Co. is a general engineering contractor that has been serving the California construction industry for over 70 years. With revenues in excess of \$200M, it is the largest member of the Lyles Construction Group, which is listed in ENR's Top 400 Contractors and Top 200 Environmental Firms. W. M. Lyles Co. is active in the public and private infrastructure markets and we focus on the construction of water/wastewater treatment plants, pump stations, pipelines and underground utilities. In order to maintain maximum control of safety, quality, cost, and schedule on our projects, we self-perform earthwork, structural concrete, mechanical/civil piping, and equipment installation. Our estimators and project managers are directly involved in a variety of construction operations.

<http://www.wmlyles.com>



**WALKER
CONSULTANTS**

Walker Consultants provides planning, design, engineering, forensics, restoration and consulting for the built environment.

Walker possesses a strong foundation as an industry leader in all aspects of parking consulting that encompass operations, technology, and mobility solutions. We offer our clients a wide spectrum of specialists and renowned experts from within the transportation industry who can bring effective and practical solutions to complex challenges.

Our abilities reach far beyond parking and mobility and include highly experienced forensic engineers who provide investigative assessments, creative repair solutions, and litigation support on all types of facilities around the world impacted by natural events as well as design or construction defects.

come see us

*IN-PERSON - October 14 (Thursday)
EST October 14, 2021*

<https://walkerconsultants.com/>



CONSULTING ENGINEERS

come see us

*VIRTUAL - October 15 (Friday) EST
October 15, 2021*

Ward, Getz & Associates, LLP (WGA) is a Houston-based professional consulting firm that specializes in civil engineering, land development, municipal engineering, construction phase services and environmental services.

WGA was designed under the premise that engineering firms can be truly unique. While we deliver solid, cost-effective engineering solutions, we also pride ourselves in providing our clients an extraordinary, consistent and personal service experience.

<http://wga-llp.com>



come see us

*IN-PERSON - October 14 (Thursday)
EST October 14, 2021
VIRTUAL - October 15 (Friday) EST
October 15, 2021*

From its inception in 1991, Weaver Consultants Group has been founded upon the tenets of attentive and responsive customer service, strong project management, and solid internal financial controls. The quality of our people, our focus on understanding and responding to our clients' needs, and our application of good business management practices have resulted in most new projects originating from our existing customer base.

<https://wcgrp.com>



come see us

*VIRTUAL - October 15 (Friday) EST
October 15, 2021*

Weeks is one of the largest marine contractors in the US, recently ranked 126th on ENR's 2020 list of Top 400 Contractors. Weeks is a family owned company, comprised of three key divisions, Construction, Dredging and Marine Services. Established in 1919, Weeks Marine, along with its wholly owned subsidiaries Healy Tibbitts Builders, McNally International, and North American Aggregates, has a broad reach across North & South America, including the Eastern Seaboard of The US and Canada, Gulf of Mexico, Caribbean, and the Pacific Islands.

Weeks Marine is headquartered in NJ, with regional offices in LA, TX, HI, Ontario and Nova Scotia. Weeks' equipment yards are located in NY Harbor, Delaware River, Louisiana's Inter-coastal, Houston Ship Channel, & Pearl Harbor, Hawaii.

<https://www.weeksmarine.com>



come see us

*IN-PERSON - October 14 (Thursday)
EST October 14, 2021*

As a specialist in civil / site development since 1960, Weihe Engineers enables its private-sector clients with site development projects across the Midwest to build with confidence. We do this by delivering best-of-class civil engineering, land surveying and landscape architecture services from passionate professionals. As a result, we're experiencing record growth and becoming the preferred firm for students (internship and coop opportunities), professionals and clients alike. Weihe Engineer has been recognized as a Top Workplaces in 2019, 2020 and 2021. Connect with us on LinkedIn, Twitter, and Instagram or visit us at [weihe.net](http://www.weihe.net).

<http://www.weihe.net>



come see us

*IN-PERSON - October 14 (Thursday)
EST October 14, 2021*

Wessler Engineering is a civil and environmental engineering firm specializing in wastewater, drinking water and stormwater projects providing services ranging from master planning and design to construction administration and asset management plans. Founded in 1975 and based in Indianapolis, Indiana, we have offices in Carmel, Evansville, Fort Wayne and Hobart, Indiana and Bluffton, Ohio.

Wessler's clients include state government agencies, municipalities, counties, industries, and private utilities. While we take great pride in the projects we complete for our clients, we are even prouder of the relationships we build. When we start planning and designing for a client, it is much More than a Project™. The partnerships we create are just as important as the projects themselves. We ...

<http://www.wesslerengineering.com>



come see us

*IN-PERSON - October 14 (Thursday)
EST October 14, 2021*

Westwood is a leading multi-disciplined AEC industry professional services provider for national wind energy, solar energy, electric transmission, private development, and public infrastructure projects. Westwood was established in 1972 in Minneapolis, Minnesota. Through a focus on its people, culture, and clients, Westwood has quickly expanded to serve clients across the nation from multiple U.S. offices.

Westwood's core services, surveying and engineering, are greatly enhanced by the in-house expertise of our planners, landscape architects, GIS experts, and environmental scientists. As a full-service firm, our clients are able to easily tap into the extra knowledge it sometimes takes to keep projects moving forward.

<https://westwoodps.com/>



come see us

*IN-PERSON - October 14 (Thursday)
EST October 14, 2021*

WGI is a national design and professional services firm leading in technology-based solutions for the construction of public infrastructure and real estate development. At WGI, our associates and clients are creatively transforming how our world is envisioned, designed, and experienced. Engineers, land surveyors, landscape architects, environmental scientists, architects and support staff choose to join WGI because of our meaningful career opportunities and entrepreneurial business approach. Join the WGI team and ignite both your passion for people and commitment to greatness -- be the change you seek.

<https://www.wginc.com>



come see us

*IN-PERSON - October 14 (Thursday)
EST October 14, 2021
VIRTUAL - October 15 (Friday) EST
October 15, 2021*

Whiting-Turner provides construction management, general contracting, design-build and integrated project delivery services on projects small and large for a diverse group of customers.

With over 50+ offices nationwide, Whiting-Turner has a strong presence throughout the country. More importantly, we recognize the value in community involvement and the benefits of strong local subcontractor relationships. We pride ourselves on familiarity with our local communities and our ability to give our clients the attention of a small business with the resources of a national corporation.

Clients include: Disney, MGM, NIH, IBM, T Rowe Price, Johns Hopkins Hospital, Cleveland Clinic, Unilever, Costco and many more across 25+ industries.

<https://whiting-turner.com>



come see us

*VIRTUAL - October 15 (Friday) EST
October 15, 2021*

At Wight & Company, we inspire the human experience through innovative design. For over 80 years, our unique Design Led-Design Build approach has offered clients the most complete option of integrated architecture, engineering and construction services. We believe that good design is good business, and we've created a workplace where design thinking is cultivated and celebrated. Our dedicated team cultivates a dynamic, high-performance work environment that fosters innovation, collaboration and fun, and a culture that supports teamwork and thoughtful risk-taking.

Wight was the first company to receive a Green Firm Certification from the Sustainable Performance Institute (SPI). We designed the first building in the country to receive LEED certification, as well as 30% of all Net-Zero ...

<http://www.wightco.com>



come see us

*IN-PERSON - October 14 (Thursday)
EST October 14, 2021*

Founded more than half a century ago, we are an employee-owned interdisciplinary firm with twenty nine offices across the United States and Europe. Supported by unparalleled laboratory and field testing capabilities, our team of structural engineers, architects, and materials scientists brings an enthusiasm for problem solving and a hands-on technical approach to every construction challenge. We have extensive experience with virtually every construction material, structural system, and architectural component.

<https://www.wje.com>



*IN-PERSON - October 14 (Thursday)
EST October 14, 2021*

WSP USA is the U.S. operating company of WSP, one of the world's leading engineering and professional services firms. Dedicated to serving local communities, we are engineers, planners, technical experts, strategic advisors and construction management professionals. WSP USA designs lasting solutions in the buildings, transportation, energy, water and environment markets. With more than 9,500 employees in 150 offices across the U.S., we partner with our clients to help communities prosper.

<http://www.wsp.com>